

**Limestone District School Board
Agenda**

**Committee of the Whole Board
(School Enrolment/School Capacity)**

Meeting

Wednesday September 28, 2016

**Limestone Education Centre
220 Portsmouth Avenue, Kingston
Barry C. O'Connor Boardroom
4:30 p.m.**

Approval of Agenda

Declaration of Conflict of Interest

Action Items:

- 1.** Initial Staff Report Regarding Yarker Family School & Odessa Public School
- 2.** Consultation with ALCDSB concerning joint use facility on Wolfe Island

Other Business

Next Meeting Date

April 24, 2017

Adjournment

Limestone District School Board
Administrative Report



Report to: The School Enrolment/School Capacity Committee of the Whole Board

From: Debra Rantz, Director of Education
Paul Babin, Superintendent of Business Services

Date: September 28, 2016

Subject: **Initial Staff Report Regarding Yarker Family School & Odessa Public School**

Objectives:

To provide Trustees with the *Initial Staff Report Concerning Yarker Family School and Odessa Public School* and to recommend approval to initiate an Accommodation Review for Yarker Family School and Odessa Public School.

History/Background:

In accordance with the Ministry of Education *Pupil Accommodation Review Guideline* (March 2015) and Board *Policy #15: Pupil Accommodation Review* it is the responsibility of Staff to review the pupil accommodation in the Board and present to the School Enrolment/School Capacity Committee (SE/SCC) an Initial Report that outlines:

- the accommodation issues in one or more schools;
- one or more accommodation options for the school(s); and
- provide rationale to support the option(s).

The Initial Staff Report must also include a *School Information Profile* for each of the schools in the report.

Observations/Analysis:

In reviewing the *Long Term Accommodation Plan* produced by Ameresco Asset Sustainability Group Inc. and received by the Board in May 2016 the Senior Staff elected to further study and to develop an Initial Report concerning Yarker Family School and Odessa Public School.

Recommendation from the LDSB Long Term Pupil Accommodation Plan Final Report (pg. 15)

To reduce surplus capacity and reducing facility renewal investment requirements in this area:

Establish a PAR in 2016/17 involving Yarker FS and Odessa PS, with a view to close Yarker FS and redirect pupils to Odessa PS;

Although the Staff and Trustees have participated in pupil accommodation reviews in the past there are a number of significant changes in the process outlined in the March 2015 Ministry *Pupil Accommodation Review Guideline*. The format, content and role of the Initial Staff Report is one of these changes.

Next steps, if the Board approves the conducting of a Pupil Accommodation Review for Yarker Family School and Odessa Public School, are as follows:

- The decision will be posted on the Board's website and communicated in writing to the affected School Councils, families of the students, staff, as well as municipal and community partners;

- In compliance with Board Policy 15, a Pupil Accommodation Review Committee (PARC) will be established (October);
- The PAR Committee will hold a minimum of 4 working meetings (early November to late March)
- There will be two PARC public meetings (End of November & early March)
- One meeting, and more, if needed, will be held with the affected municipality and community partners (December - January);
- Presentation of the Final Staff Report to SE/SCC on April 24, 2017;
- SE/SCC meeting on May 9, 2017 to hear delegations and consider reports and communication received;
- SE/SCC meeting on May 17, 2017 to further consider reports and communication received and make a recommendation to be considered at the regular Board meeting, May 17, 2017.

Recommendations:

1. That the School Enrolment/School Capacity Committee of the Whole Board (SE/SCC) receive the *Initial Staff Report Regarding Yarker Family School and Odessa Public School*; and
2. That the SE/SCC recommend that the Board approve the conducting of a Pupil Accommodation Review (PAR) for Yarker Family School and Odessa Public School to commence in the fall of 2016.

This report was reviewed by:



Paul Babin
Superintendent of Business Services



Debra Rantz
Director of Education

Attached: Initial Staff Report for Yarker Family School and Odessa Public School



Initial Staff Accommodation Report

Regarding Yarker Family School and Odessa Public School

1. Purpose

The purpose of this Initial Staff Accommodation Report is to:

- provide Trustees with background information on the accommodation situation at Yarker Family School and Odessa Public School;
- to provide an accommodation option, and
- to seek School Enrolment/School Capacity Committee of the Whole Board (SE/SCC) approval to conduct a Pupil Accommodation Review for Yarker Family School and Odessa Public School.

2. Long Term Accommodation Plan

The *Long Term Pupil Accommodation Plan Final Report* (LTAP) completed by Ameresco Asset Sustainability Group Inc. and received by the Board in May 2016 details the current and projected future state of the Board's elementary and secondary panels. The LTAP sets out the growth trends, the schools' structures and program(s), historic and projected enrolment, and facility utilization rates. The LTAP helps in identifying planning areas and schools that face challenges due to enrolment and/or facility utilization and in developing plans that will "effectively right-size and manage excess capacity." *Ministry Memorandum 2016: B04*

Recommendation from the LDSB Long Term Pupil Accommodation Plan Final Report (pg. 15)

To reduce surplus capacity and reducing facility renewal investment requirements in this area:

Establish a PAR in 2016/17 involving Yarker Family School and Odessa Public School, with a view to close Yarker Family School and redirect pupils to Odessa Public School;

Yarker Family School was identified as a school with low enrolment and facility utilization rates now and into the projected future. Enrolment and facility utilization information can be found in the *School Information Profile Report* attached as Appendix A and is referenced below.

3. Goals in Reviewing Yarker Family School and Odessa Public School

The goals in reviewing the schools and bring forward an option were to:

- Maintain or improve the curricular, extra curricular and social opportunities for the students;
- Maximize the use of Board and Ministry of Education resources – staff, facilities (reduce unused space) and transportation; and
- Reduce the financial liability of the Board and the Ontario Ministry of Education.

4. Enrolment

Yarker Family School is a JK to Grade 3 school with an on-the-ground capacity of 72 students. It is the only JK to Grade 3 school in the Limestone District School Board. In 2015-16 the school enrolment was 36 students representing a decline of 47% from 2011, when there were 68 students attending. Projected enrolment for the next 10 years indicates that the number of students will probably remain at about 35. This represents a utilization of about 50%. (See Appendix A pg.11 for detailed information concerning enrolment.)

Of the 36 students attending Yarker Family School in 2015-16, 69.4% of the students (25) were from within the catchment area and 30.6% (11) were from outside the boundary. (See Appendix A pg. 11.)

Of the 51 JK to Grade 3 students in the Yarker Family School catchment area attending a regular program in a Limestone DSB school in 2015-16, 49%(25) attended Yarker Family School, 51% (26) attended another school. As well, 5 students attended a French Immersion program. (See Appendix A pg. 11.)

Of the 51 JK-3 students in the Yarker Family School catchment area attending a regular program in a Limestone DSB school in 2015-16, 23.5% (12) attended Odessa Public School.

5. School Context

The school catchment area is adjacent to that of Centreville Public School, Enterprise Public School, Harrowsmith Public School and Odessa Public School. The distance, according to Google Maps, between Yarker Family School and the bounding elementary schools is listed below. The Grade 4 to 8 students in the Yarker Family School catchment area are presently included in the Odessa Public School catchment area. All of the schools in the surrounding catchment areas have excess space except Harrowsmith Public School.

Table 1: Distance Between Yarker Family School and Adjacent LDSB Elementary Schools and their Projected Utilization

| Adjacent LDSB School | Distance in km | Approximate Drive Time in Minutes | Utilization | |
|----------------------|----------------|-----------------------------------|-------------|---------|
| | | | 2016-17 | 2020-21 |
| Centreville P.S. | 16.1 | 13 | 83% | 73% |
| Enterprise P.S. | 16.6 | 14 | 66% | 64% |
| Harrowsmith P.S. | 10.0 | 9 | 105% | 105% |
| Newburgh P.S | 12.3 | 12 | 74% | 63% |
| Odessa P.S. | 12.5 | 12 | 68% | 66% |

Senior Staff considered the possibility of changing the boundary between Harrowsmith Public School and Yarker Family School and sending additional students to Yarker Family School but rejected the option for the following reasons:

- The present eastern boundary of Yarker Family School catchment area is approximately 6 km from Harrowsmith Public School. To move the boundary to the east in order to capture at least 25 JK to Grade 3 students, the boundary would reside within about 3 km of Harrowsmith Public School.

- The boundary could impact JK to Grade 3 only creating a disconnect when students move to Grade 4 with some going to Odessa Public School and some going to Harrowsmith Public School.
- If the boundary change impacted all elementary students then students in Grade 4 to 8 would be bussed to Odessa Public School instead of Harrowsmith Public School, significantly increasing their ride time.
- The enrolment at Harrowsmith Public School is easily accommodated with the use of a portable and the high utilization rate assists the Board in supporting other schools with low utilization rates where students cannot be consolidated into another adjacent school without significant increases in bus ride times.

Historically Yarker Family School and Odessa Public School were under the Lennox and Addington County Board of Education and therefore, the boundaries were established to include the Grade 4 to 8 students in the Yarker Family School catchment area into Odessa Public School. Given the utilization rate for Odessa Public School there is more than enough space to accommodate the JK to Grade 3 students from Yarker Family School without any facility changes to Odessa Public School. With the inclusion of the Yarker Family School students the projected utilization rate would be 72.65% in 2020-21. However, it is anticipated that not all students would move to Odessa Public School if that option was approved by the Board, since 11 of the 36 students in 2015-16 were from out of boundary some may elect to attend the school in their catchment area of residence. As well, some students in the Yarker Family School catchment area may apply to attend one of the other adjacent schools as an out-of-boundary student.

6. School Organization

In 2015-16 the students at Yarker Family School were organized into two classes, a JK to Grade 1 of 20 students and a Grade 2-3 of 16 students. See Appendix A, page 10 for details. An organization of students into at least one split grade class and one triple grade class will be the organization of the foreseeable future.

Odessa Public School in 2015-16 had 2 JK/SK classes and 13 Grade 1 to 8 classes. Of the 13 Grade 1 to 8 classes 7 were single grade and 6 were split grade classes. There were no triple grade classes.

7. School Staffing

In 2015-16 the Yarker Family School was provided the following staff allocations:

- 2 classroom teachers;
- 0.15 student support teacher;
- 0.32 French teacher;
- 0.08 Preparation time; and
- 0.1 Unique needs (for Head Teacher).

Total teaching staff for 2015-16 was 2.65. Some administrative time was allotted from Odessa Public School for the supervision of Yarker Family School.

0.86 Office Administrator time was assigned to Yarker Family School.

If the Yarker Family School students were consolidated into Odessa Public School, it is estimated based on the 2015-16 staffing numbers that there would be a savings 0.86 Office Administrator time and a small amount of teaching time.

8. Instructional Profile Highlights

Yarker Family School has slightly lower class sizes than the class size targets for the Board and Ministry. In 2015-16 the enrolment in the JK/SK/Gr 1 was 20 students. The Board staffs JK/SK classes at 26 and grade 1 classes at 20. The Grade 2/3 class enrolment was 16 with the Board staffing number being 20.

All classes at Odessa Public School in 2015-16 were at or slightly below the Board's staffing numbers, with 7 classes at the staffing level, 7 classes below staffing levels and 1 single grade class above the staffing level by one student. (See Appendix B pg. 13-14 for details.)

In 2015-16 Yarker Family School students participated in an abundance of field trips and had many community guests visit the school.

In 2015-16 Odessa Public School offered a full complement of extra-curricular activities, for students in Grades 3 to 8 but primarily for those in the high junior/intermediate grades. The students participated in all track and field events and sports such as basketball, volleyball, soccer, and touch football. Where junior teams were permitted, students from Odessa Public School participated. Further to that, the school had an eco-club, a character club, and others as interest and need arose. The extra curricular opportunities provided a rich environment to supplement the regular curriculum for the students participating as well as for those observing and looking to become involved when older.

Odessa Public School has an Itinerant School-to-Community teacher and hosts a Pathways for Children and Youth NEXUS program, a Limestone Learning Disabilities program and a Challenge program.

Odessa Public School offers a before/after school program through Lennox and Addington Resource Centre (LARC), with drop offs as early as 7 am and pick ups as late as 6 pm.

9. Facility Profile Highlights

Building and Site

Yarker Family School was opened in 1962. In 2007 under an agreement with the Township of Stone Mills an addition was built onto the school to house a Township Library. In 2014 a Kindergarten room was added to accommodate the regulations regarding Full-Day Kindergarten. See Appendix A page 2.

Odessa Public School was opened in 1955. Subsequently additional classrooms, a library, a double gymnasium and stage were added to the school in 1960, 1966, 1968 and 1974. See Appendix B page 2 for additional information.

Table 2: Key Site and Building Space information

| Building or Site Space Information Item | Yarker Family School | Odessa Public School |
|--|----------------------|-----------------------|
| Size of school Site | 0.85 hectares | 2 hectares |
| Soft Surface Area/ Green Space | 4607 m ² | 18,449 m ² |
| Hard Surface Play Area | 270 m ² | 774 m ² |
| Play Structures | 6 | 12 |
| Outdoor Facilities (tracks, courts etc.) | 0 | 3 soccer fields |

| Building or Site Space Information Item | Yarker Family School | Odessa Public School |
|---|----------------------|---------------------------------|
| Building Area | 406.8 m ² | 4110.9 m ² |
| Number of Instructional Rooms | 3 classrooms | 20 classrooms, 2 resource rooms |
| Number of Portables | 1 (to be relocated) | 1 (to be relocated) |

Renewal Needs and Facility Condition Index (FCI)

Each school in Ontario is thoroughly inspected every 5 years by professional personnel contracted by the Ontario Ministry of Education. The last cycle of inspections took place from 2011 to 2015 and a new cycle is currently underway. Following the inspection information about the condition of a school is entered into a provincial data base. Also incorporated are the events needed to maintain the school building based on industry standards and costs. The school board personnel update the data base as needed maintenance is completed

“The Facility Condition Index (FCI) is a benchmark used by the Ministry of Education to compare the relative condition of schools across the Province and determine whether it is more economical to fully modernize an existing school or to replace it. FCI is a standard tool used by architects, engineers, and facility planners.

A school’s FCI is calculated by dividing the value of the school’s deficiencies (renewal needs) by the replacement value of the school. Since the list of renewal needs and the renewal events completed are regularly updated in the data base the FCI changes with each addition or deletion.”
Facility Condition Index, LDSB Long Term Pupil Accommodation Plan, Final Report, Appendix B

“It should be noted that the assessments are a snapshot in time as of the date of inspection. The renewal needs and facility condition index (FCI), if revisited, can naturally vary from the time of assessment for many reasons:

- Useful life of building components can naturally vary due to weather, use and maintenance. These factors could accelerate or decelerate the amount of renewal work required over the original five-year assessed period.
- Investments made by a board to address renewal needs after the assessment period could help reduce the amount of renewal work that needs to be carried out over the five year assessed interval. If the building were reassessed during this time, this could potentially reduce the FCI if all other renewal needs remain unchanged or improved.
- Change in the costs of building components from the time of assessment (e.g. change in exchange rate and commodity prices).” *Technical Paper: School Facility Condition Assessment Data Assessment Cycle: 2011 – 2015 pg. 2*

Both Yarker Family School and Odessa Public School were assessed in 2012. Therefore, the Ministry of Education’s 5-year FCI would capture renewal needs during the years 2012 to 2016.

Table 3: Facility Condition Index Information

| Information Item | Yarker Family School | Odessa Public School |
|--|----------------------|----------------------|
| Replacement Value | \$2,014,789 | \$14,666,335 |
| Ministry Reported Renewal Needs as of Aug. 2016 | \$404,219 | \$5,986,183 |
| Ministry Reported FCI as of Aug. 2016 | 20.2% | 40.8% |
| Estimated Renewal Needs as of 2021 (assuming no work is completed) | \$856,638 | \$8,990,270 |
| Estimated FCI as of 2021 | 42.5% | 61.3% |

“A higher FCI percentage does not indicate that a school is unsafe or that the wellbeing of students and staff is endangered. Schools are monitored monthly for health and safety issues by on site staff. Each facility is also inspected regularly for maintenance issues by Board Facility Services Staff. As well third party professionals are often employed to inspect some areas of the schools such as roofs.” *Facility Condition Index, LDSB Long Term Pupil Accommodation Plan, Final Report, Appendix B*

For additional information see Appendix A pages 6 to 8 and Appendix B pages 6-11.

The renewal needs listed against each of the Board’s schools represents a liability to the Board and the Ontario Ministry of Education. The closure and sale of a building removes the liability.

10. Key Operational Costs for Yarker Family School

Custodial services were contracted at a cost of \$21,880.

Other operational costs for 2015-16 included:

Electricity: \$25,837 Water: \$1,240 Snow Plowing: \$5,100.

Grass Cutting: \$480. Network Agreement \$6,924.

The 2015-16 total operational costs for all of the items listed in this section is \$61,461. This yearly cost would be saved with the consolidation of the Yarker Family School students with those at Odessa Public School

These 2015-16 costs represent \$151. per square metre and \$1,707. per student.

11. Transportation

In 2015-16 there were 2 bus routes to transport the students to Yarker Family School. In 2016-17 there will be one bus route. The busing information below reflects the 2016-17 transportation information received from Tri-Board Student Transportation Services Inc. in June 2016.

Table 4 Busing Information Estimated for 2016-17

| Information Item | AM Bus Run | PM Bus Run |
|--|------------|------------|
| Number of students to be transported | 25 | 27 |
| Shortest estimated ride time | 1 min. | 3 min. |
| Longest estimated ride time, in boundary student | 29 min | 36 min. |
| Longest estimated ride time, out of boundary student | 34 min. | 15 min. |

| Information Item | AM Bus Run | PM Bus Run |
|--|--------------------|-------------------|
| Average estimated ride time* | 16.08 to 19.28 min | 14.75 to 19.4 min |
| Shortest distance to school, in boundary transported student | 0.35 km | 0.35 km |
| Shortest distance to school, out of boundary transported student | 0.24 km | 0.24 km |
| Longest distance to school, in boundary transported student | 4.23 km | 4.45 km |
| Longest distance to school, out of boundary transported student | 4.22 km | 10 km |

*The average ride times vary depending on where the students are picked up or dropped off, at home or a caregiver's address.

Under *Board Policy #16: Student Transportation*, students living in the Yarker Family School catchment area and 1.6 km or more from the school are eligible for transportation to the school. Of the 25 students attending Yarker Family School from within the school boundary 12 students (48%) are within walking distance. Of the 11 out of boundary students 2 are within walking distance. However, due to the age of the students, the lack of sidewalks along many of the streets and the speed of the traffic on some roads most of the students within the 1.6 km radius of the Yarker Family School are transported. In the morning run for 2016-17, 25 of the 35 students (projected enrolment 2016-17) or 71.4% are scheduled to be transported. In the afternoon run for 2016-17, 27 of the 35 students (projected enrolment) or 77% are scheduled to be transported. Through the Baragar Geo-School Program and the Tri-Board Transportation List it was determined that 3 students from within the catchment area and outside the walking area were not transported by Tri-Board Transportation and 4 students outside the catchment area but attending Yarker Family School were not transported by bus.

If the Board approved the consolidation of the Yarker Family School students into Odessa Public School, the Yarker Family School bus would be eliminated and the JK-3 students would be accommodated on the three buses presently travelling through the area picking up the Grade 4 to 8 students and transporting them to Odessa Public School. Ride time would be increased to cover the distance from Yarker to Odessa (12.5 km). The average ride times for the Grade 4 to 8 students in the Yarker Family School catchment area attending Odessa Public School ranges from approximately 26 to 30 minutes.

12. Community and Municipal Partners

Two representatives of Stone Mills Township attended the Limestone District School Board's Community Planning and Partnerships Annual Meeting (CPP) on September 8, 2016, along with other municipal and community partners to discuss the Board's Long Term Accommodation Plan. Below are two excerpts from the CPP Meeting notes credited to the Stone Mills representatives at the meeting and the response.

"B. Brooks inquired about the possibility to further shared services in LDSB buildings. In Stone Mills Township school sites are also being used to host community halls, libraries, etc. Superintendent Babin stated that Senior Staff will meet with Township representatives to discuss options for viable partnerships.

D. Davidson inquired if the Board is looking at other options, such as changing boundaries or the number of grades within a specific school. Superintendent Babin stated all avenues would

be reviewed. He also noted that boundaries were looked at as part of the Ameresco review.”
CPP Minutes

Following receipt of the *Initial Staff Report Concerning Yarker Family School and Odessa Public School* by the SE/SCC members the report will be shared with representatives of the Stone Mills Township and other partners, as appropriate. As well, one or more meetings, as needed, will be held with the affected municipality and community partners (December - January).

13. Proposed Accommodation Option

Following review and discussion of the information in the School Information Profiles and consideration of the feedback received from the Municipal and Community Partners, the Senior Staff of the Limestone District School Board endorses the following preferred option:

- That the present catchment area of the Yarker Family School be included with the Odessa Public School catchment area and the JK-Grade 3 students consolidated into Odessa Public School;
- That the consolidation of the Yarker Family School students into Odessa Public School commence in September 2018; and
- That the Yarker Family School be closed and declared surplus to the Board in the fall of 2018.

This option addresses the low enrolment and significant underutilization of Yarker Family School and meets the goals set out at the beginning of the report.

14. Value of the Preferred Option

The Senior Staff believes that the preferred option outlined above will:

Maintain or improve the curricular, extra curricular and social opportunities for the students by exposing them to:

- a more focused curricular experience;
- a wider variety of extra curricular opportunities;
- a wider range of staff talents and interests;
- a larger cohort base from which to select friends;
- a wider age group of students for assistance and modelling; and
- the opportunity to join their siblings and unite the family in one elementary school.

Maximize the use of Board and Ministry of Education resources – staff, facilities and transportation by:

- reducing the number of staff required;
- reduce the utility and other costs of operating the schools;
- improving the utilization of the schools; and
- reducing the number of buses needed.

Reduce the financial liability of the Board and the Ontario Ministry of Education by:

- reducing the renewal needs amount; and
- selling of the building.

As well as value to the students and the Board, the preferred option has potential value to the community by allowing the sale of the building and property to the Township of Stone Mills at a very reasonable price.

15. Recommendations

The Senior Staff recommends that:

1. The Board receive the *Initial Staff Report Regarding Yarker Family School and Odessa Public School*; and
2. The Board approve the conducting of a Pupil Accommodation Review to include Yarker Family School and Odessa Public School to commence in the fall of 2016.

The mandate for the Pupil Accommodation Review Committee will be to provide feedback on the Initial Staff Report and to present additional options, if desired, with rationale consistent with the goals.

Appendix A: Yarker Family School Information Profile Report

Appendix B: Odessa Public School Information Profile Report

Appendix C: References

School Information Profile

Information provided in the profile is based on the 2015-16 school year unless otherwise noted.

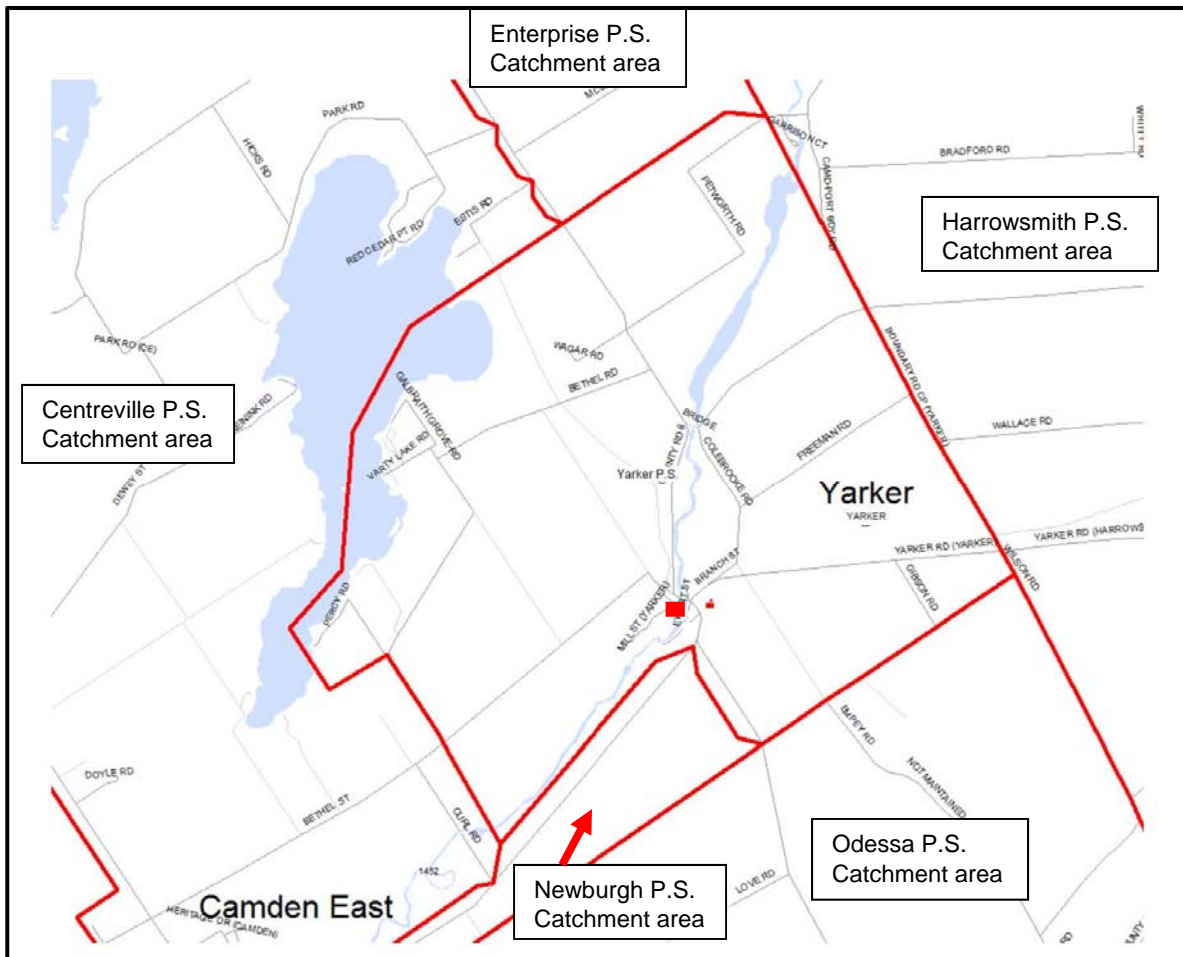
Yarker Family School

4315 County Rd 1, Yarker, KOK 3N0



1. Facility Profile

School Attendance Area:



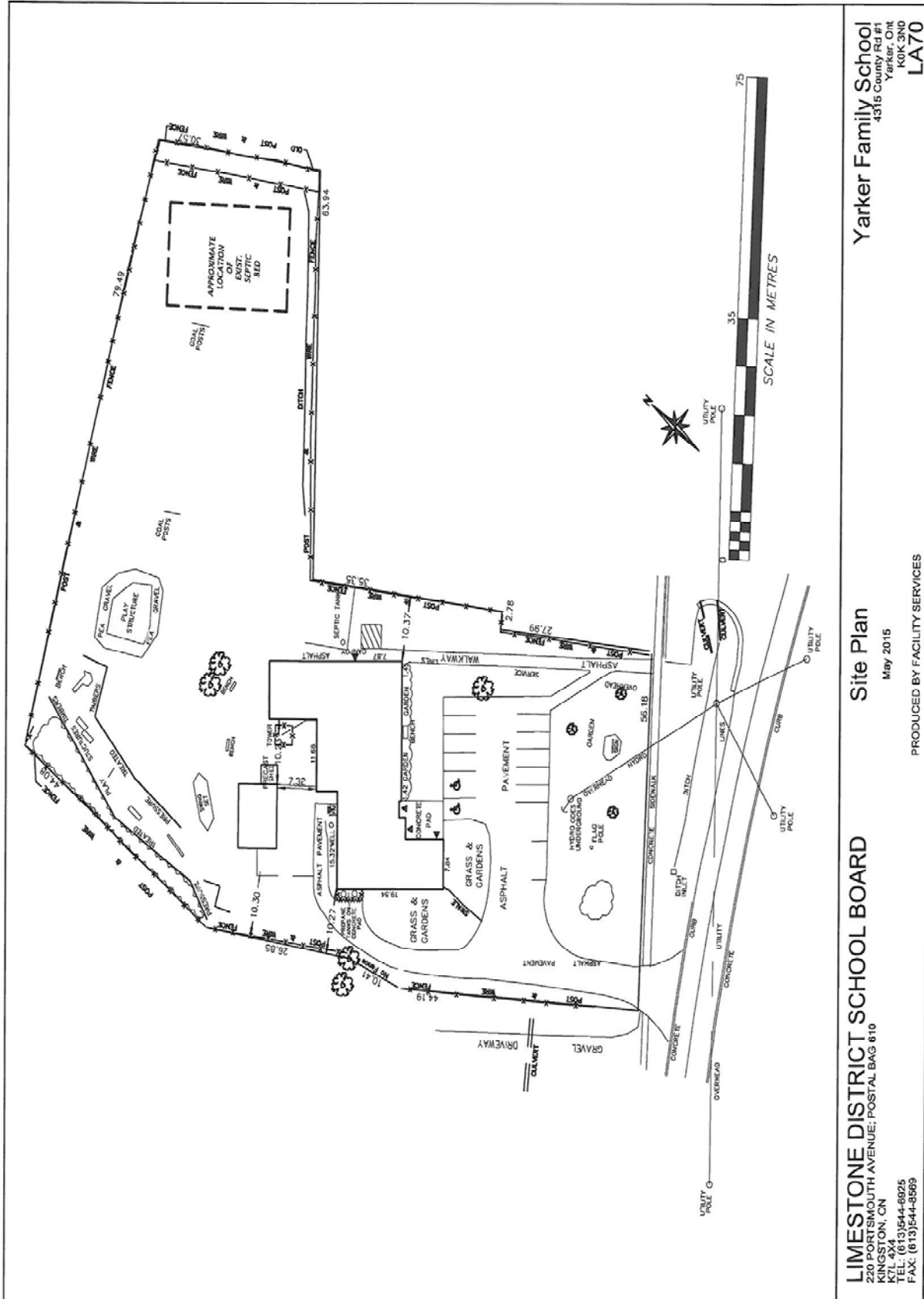
Aerial Photo



Table 1: Permanent Gross Floor Area and Age

| Year Built | GFA(m ²) | Type of Space | Comment |
|------------|----------------------|---------------|--------------|
| 1962 | 261.52 | Original | |
| 2014 | 145.30 | Addition | FDK Addition |

Site Plan:



Yarker Family School
 4315 County Rd #1
 Yarker, Ont
 K0K 3N0
LA70

Site Plan
 May 2015

PRODUCED BY FACILITY SERVICES

LIMESTONE DISTRICT SCHOOL BOARD
 220 PORTSMOUTH AVENUE; POSTAL BAG 610
 KINGSTON, ON
 K7L 4X4
 TEL: (613)544-6825
 FAX: (613)544-8869

Yarker Family School is situated on a 0.85-hectare site. The school is 406.8 m², excluding the Township Public Library section of the building.

The site has 4607 m² of soft surface and 270 m² of hard surface play area. There are six play structures or designated activity areas and no outdoor facilities such as tracks, courts or baseball diamonds.

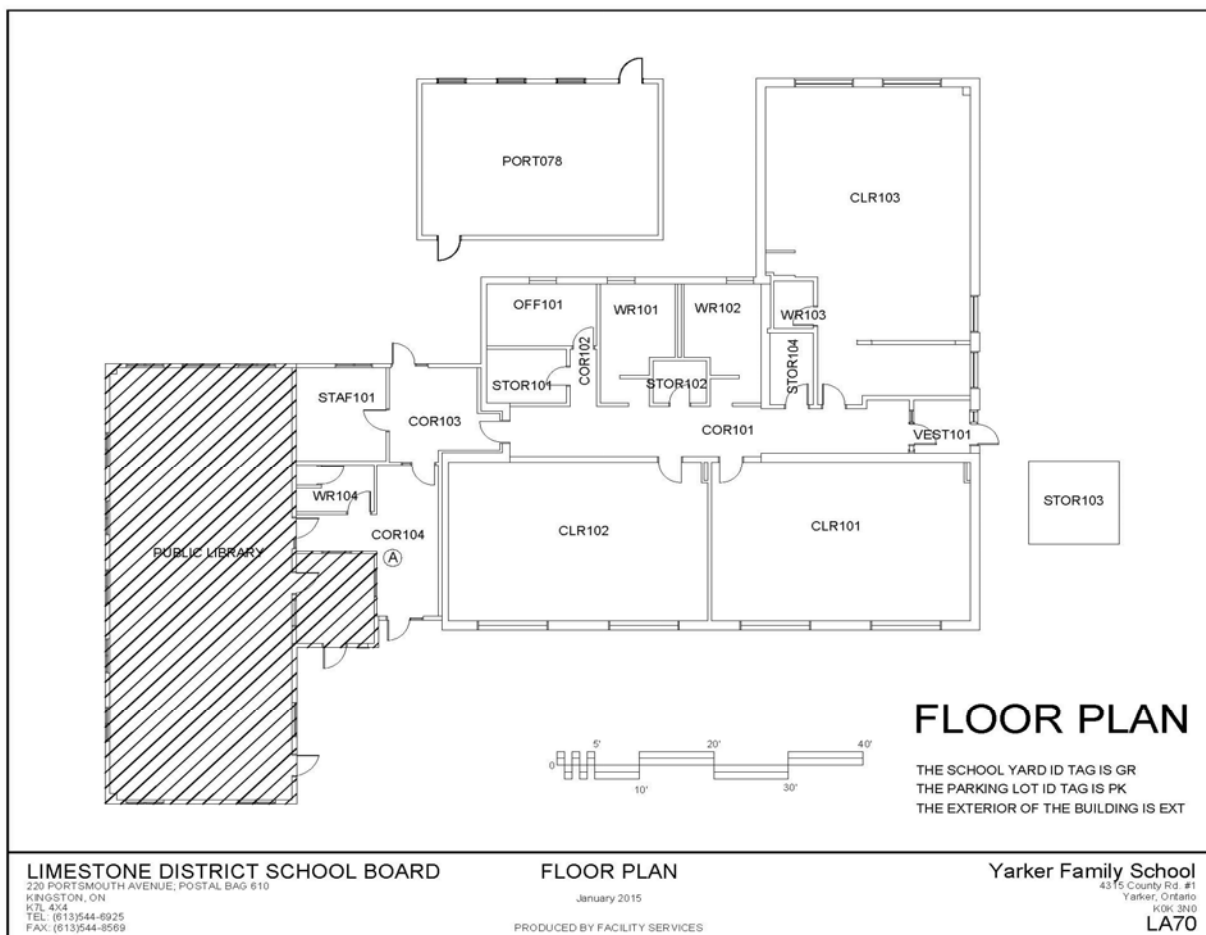
In 2015-16 there was one portable on the site but it was locked and not in use. The portable is in good repair and Facility Services plans to move the portable to another school site.

Yarker Family School has 2 regular classrooms (CLR 101 and CLR 102) and a Kindergarten room (CLR 103). See plan below.

In the LDSB *Multi-Year Accessibility Plan for the Period December 2012 to December 2017* (revised June 2016) the school is rated as Level Four for accessibility. The building has complete access and washrooms can accommodate wheelchairs. There is also a special needs washroom on site.

The On-the-ground (OTG) capacity of the school is 72, [(23x2) +26]. With an enrolment in 2015-16 of 36 this leaves 36 surplus student spaces and a utilization rate of 50%.

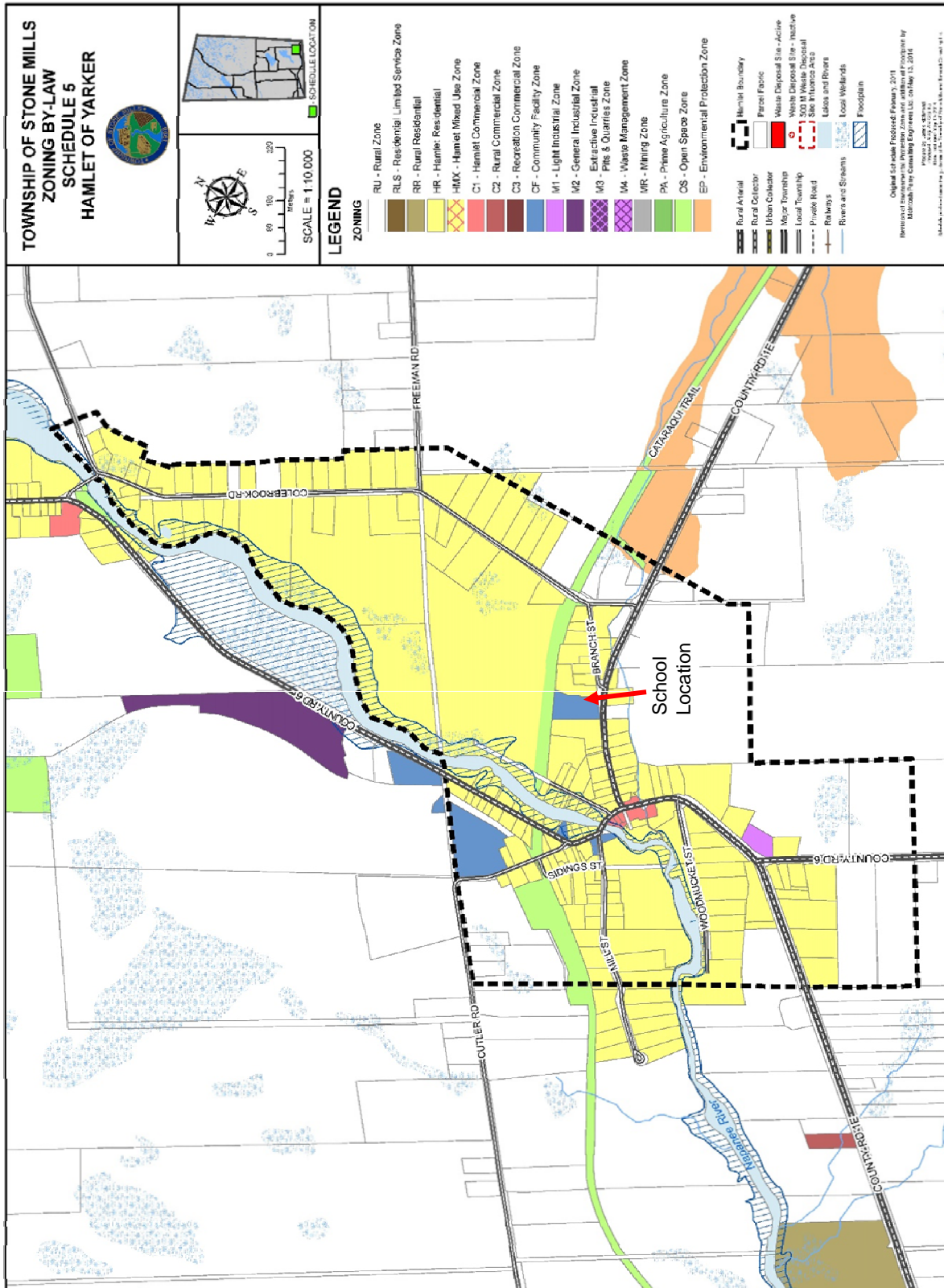
Floor Plan:



Zoning Map:

Yarker Family School is located within an area zoned "Community Facility Zone".

http://www.stonemills.com/images/services/Planning/Bylaw_2014-744_Schedule_5-Yarker.pdf



Facility Renewal:

Each school in Ontario is thoroughly inspected every 5 years by professional personnel contracted by the Ontario Ministry of Education. Following the inspection information about the condition of a school is entered into a provincial data base. Also incorporated are the events needed to maintain the school building based on industry standards and costs. The school board personnel update the data base as needed maintenance is completed. Below is a table containing the list of renewal needs for Yarker Family School through to 2020. No items are presently listed for 2021.

Table 2: Facility Renewal Event List for Yarker Family School to 2021

| Limestone District School Board | | | |
|---|--|-------------|-------------|
| Event Listing by Ascending Year Revision | | | |
| Yarker Family School | | | |
| Requirement Name | Prime System | Year | Cost |
| Other Heat Generating Systems - Electric Heating System - Original Building Renewal | D302099-Heat Generating - Other | 2012 | \$10,847 |
| Study [Branch Wiring - Original Building] | D502001-Lighting and Branch Wiring - Branch Wiring | 2012 | \$7,762 |
| Major Repair [Playing Fields - Grass Covered Playground] | G2040-Site Development | 2012 | \$32,540 |
| .Study [Septic Tanks - Site] | G302005-Sanitary Sewer - Septic Tanks | 2012 | \$8,677 |
| Fencing & Gates - Page-Wire Fence - Site Renewal | G204001-Site Development - Fencing and Gates | 2013 | \$27,116 |
| Exhaust Systems Renewal | D304007-Distribution Systems - Exhaust Systems | 2013 | \$10,847 |
| Main Switchboards - Main Disconnect Renewal | D501003-Electrical Service and Distribution - Main Switchboard | 2013 | \$34,915 |
| Main Switchboards - Main Distribution Panel Renewal | D501003-Electrical Service and Distribution - Main Switchboard | 2013 | \$21,693 |
| Septic Tanks - Site Renewal | G302005-Sanitary Sewer - Septic Tanks | 2013 | \$37,963 |
| Study [Domestic Water Distribution - Plumbing Piping Systems - Original Building] | D202001-Domestic Water Distribution - Pipes and Fittings | 2014 | \$10,847 |
| Exterior Walls - Sealant - Original Building Renewal | B2010-Exterior Walls | 2014 | \$8,677 |
| Floor Finishes - Vinyl Floor Tiles - Classrooms 102 Renewal | C302015-Floor Finishes - Vinyl Sheet | 2014 | \$5,423 |
| Plumbing Fixtures - Original Building Renewal | D2010-Plumbing Fixtures | 2014 | \$10,227 |
| Domestic Water Distribution - Domestic Water Heater Renewal | D2020-Domestic Water Distribution | 2014 | \$10,847 |
| Lighting Equipment - Interior Lighting - Original Building Renewal | D5020-Lighting and Branch Wiring | 2014 | \$15,525 |
| Branch Wiring - Original Building Renewal | D502001-Lighting and Branch Wiring - Branch Wiring | 2014 | \$43,386 |
| Exterior Doors - Exterior Door Hardware - Original Building Renewal | B2030-Exterior Doors | 2015 | \$8,677 |

Limestone District School Board

Event Listing by Ascending Year Revision

Yarker Family School

| Requirement Name | Prime System | Year | Cost |
|---|--|-------------|------------------|
| Exterior Doors - Original Building Renewal | B2030-Exterior Doors | 2015 | \$5,785 |
| Fittings - Washroom Partitions - Original Building Renewal | C103002-Fittings - Washroom Accessories | 2015 | \$18,439 |
| Fittings - Millwork Renewal | C103009-Fittings - Millwork | 2015 | \$28,472 |
| Floor Finishes - Carpet - Classrooms 102 and 103 Renewal | C302005-Floor Finishes - Carpet | 2015 | \$8,677 |
| Domestic Water Distribution - Plumbing Piping Systems - Original Building Renewal | D202001-Domestic Water Distribution - Pipes and Fittings | 2015 | \$17,354 |
| Site Development - Signage - Pedestal mounted Renewal | G2040-Site Development | 2015 | \$8,677 |
| Interior Doors - Original Building Renewal | C1020-Interior Doors | 2016 | \$10,847 |
| Fittings - Original Building Renewal | C1030-Fittings | 2017 | \$9,340 |
| Fittings - Original Building Renewal | C103018-Fittings - Window Coverings | 2017 | \$16,624 |
| Wall Finishes - Original Building Renewal | C301005-Wall Finishes - Paint | 2017 | \$7,456 |
| Wall Finishes - Original Building Renewal | C301005-Wall Finishes - Paint | 2017 | \$3,275 |
| Wall Finishes - Original Building Renewal | C301005-Wall Finishes - Paint | 2017 | \$3,275 |
| Ceiling Finishes - Original Building Renewal | C303006-Ceiling Finishes - Paint | 2017 | \$7,570 |
| Controls & Instrumentation - Original Building Renewal | D3060-Controls and Instrumentation | 2017 | \$7,455 |
| Playing Fields - Site Renewal | G2040-Site Development | 2017 | \$17,842 |
| Landscaping - Site Renewal | G2050-Landscaping | 2017 | \$14,844 |
| Site Civil/Mechanical Utilities - Site Renewal | G30-Site Mechanical Utilities | 2017 | \$334,283 |
| Well Systems - Site Renewal | G301001-Water Supply - Well Systems | 2017 | \$14,886 |
| Site Electrical Utilities - Site Renewal | G40-Site Electrical Utilities | 2017 | \$12,913 |
| Fire Alarm Systems Renewal | D503001-Communication and Security - Fire Alarm | 2019 | \$652 |
| Lighting Equipment - Original Building - Exterior Lighting - Wall or soffit mounted Renewal | D502004-Lighting and Branch Wiring - Exterior Lighting | 2020 | \$2,000 |
| Other Communications & Alarm Systems - Information Technology Systems Renewal | D503099-Communication and Security - Other | 2020 | \$5 |
| Total | | | \$856,638 |

Facility Condition Index (FCI):

(Some of the information below was extracted from *Facility Condition Index, LDSB Long Term Pupil Accommodation Plan, Final Report, Appendix B*)

The Facility Condition Index (FCI) is a benchmark used by the Ministry of Education to compare the relative condition of schools across the Province and determine whether it is more economical to fully modernize an existing school or to replace it. FCI is a standard tool used by architects, engineers, and facility planners.

A school's FCI is calculated by dividing the value of the school's deficiencies (renewal needs) by the replacement value of the school. Since the list of renewal needs and the renewal events completed are regularly updated in the data base the FCI changes with each addition or deletion.

$$\text{Facility Condition Index (FCI)} = \frac{\text{Cost to Correct Deficiencies}}{\text{Current Facility Replacement Value}}$$

The replacement value of Yarker Family School is \$2,014,789.

The Renewal Needs to 2016, as listed above, and reported by the Ontario Ministry of Education is \$404,219.

The Facility Condition Index, as of 2016, as reported by the Ministry of Education is 20.2% ($\$404,219 \div \$2,014,789 = 20.2\%$)

See information concerning the Ministry release of school FCI data at <http://www.edu.gov.on.ca/eng/parents/fci.html> and the LDSB Administrative Report regarding the release at <http://www.limestone.on.ca/PARC/Documents/Administrative%20Report%20re%20Ministry%20Release%20of%20FCI%20Data>

The estimated Renewal Needs to 2021, as of September 2016 and assuming no work is done to complete any of the events, is \$856,638.

The estimated Facility Condition Index as of 2021 is 42.5% ($\$856,638 \div \$2,014,789 = 42.5\%$)

A higher FCI percentage does not indicate that a school is unsafe or that the wellbeing of students and staff is endangered. Schools are monitored monthly for health and safety issues by on site staff. Each facility is also inspected regularly for maintenance issues by Board Facility Services Staff. As well third party professionals are often employed to inspect some areas of the schools such as roofs.

Facility Improvements:

In 2014 a 145 square metre Kindergarten room was added to the school. The funding for the addition was received through a special grant from the Ontario Ministry of Education. As a part of this project some improvements were made to the septic system at a cost of approximately \$4,210.

Utility Costs & Other Key Operation Costs:

For 2015-6 the utility and other costs were as follows:

Electricity: \$25,837 Water: \$1,240 Snow Plowing: \$5100.
 Grass Cutting: \$480. Network Agreement \$6924.
 Contract custodial cost – \$21,880.

Total cost for utilities and other key contract costs is \$61,461.

These 2015-16 costs represent approximately \$151. per square metre and \$1,707. per student.

Distance and Transportation:

Busing

In 2015-16 there were 2 bus routes to transport the students to Yarker Family School. In 2016-17 there will be one bus route. The busing information below reflects the 2016-17 transportation information received from Tri-Board Student Information Services Inc. in June 2016.

Table 3: Bus Transportation Information for Students Attending Yarker Family School

| Information Item | AM Bus Run | PM Bus Run |
|--|--------------------|-------------------|
| Number of students to be transported | 25 | 27 |
| Shortest estimated ride time | 1 min. | 3 min. |
| Longest estimated ride time, in boundary student | 29 min | 36 min. |
| Longest estimated ride time, out of boundary student | 34 min. | 15 min. |
| Average estimated ride time* | 16.08 to 19.28 min | 15.75 to 19.5 min |
| Shortest distance to school, in boundary transported student | 0.35 km | 0.35 km |
| Shortest distance to school, out of boundary transported student | 0.24 km | 0.24 km |
| Longest distance to school, in boundary transported student | 4.23 km | 4.45 km |
| Longest distance to school, out of boundary transported student | 4.22 km | 10 km |

*The average ride times vary depending on where the students are picked up or dropped off, at home or a caregiver's address.

Under *Board Policy #16: Student Transportation*, students living in the Yarker Family School catchment area and 1.6 km or more from the school are eligible for transportation to the school. Of the 25 students attending Yarker Family School from within the school boundary 12 students (48%) are within walking distance. Of the 11 out of boundary students 2 are within walking distance. However, due to the age of the students, the lack of sidewalks along many of the streets and the speed of the traffic on some roads most of the students within the 1.6 km radius of the Yarker Family School are transported. In the morning run for 2016-17 25 of the 35 students (projected enrolment 2016-17) or 71.4% are scheduled to be transported. In the afternoon run for 2016-17 28 of the 35 students (projected enrolment) or 77% are scheduled to be transported. Through the Baragar Geo-School Program and the Tri-Board Transportation List it was determined that 3 students from within the catchment area and outside the walking area were not transported by Tri-Board Transportation and 4 students outside the catchment area but attending Yarker Family School were not transported by bus.

Since there were only two buses in 2015-16 and only one scheduled for 2016-17, and a total of 36 students, the issues related to bus/car access to the school are minimal.

There are 14 parking spaces at the school, two of which are designated for handicap parking. This easily accommodates the staff and visitors on a regular day-to-day basis.

Distances to Adjacent LDSB Elementary Schools

Distance to adjacent schools from Yarker Family School (using shortest route according to Google Maps):

| | | |
|------------------|---------|-------------------------------|
| Centreville P.S. | 16.1 km | approximately 13 minute drive |
| Enterprise P.S. | 16.6 km | approximately 14 minute drive |
| Harrowsmith P.S. | 10.0 km | approximately 9 minute drive |
| Newburgh P.S. | 12.3 km | approximately 12 minute drive |
| Odessa P.S. | 12.5 km | approximately 12 minute drive |

2. Instructional Profile

School Organization and Staffing

Yarker Family School is a JK to Grade 3 school. In 2015-16 the 36 students were organized into two regular program classes, JK to Grade 1 and Grade 2-3.

Table 4: Class Organization and Enrolment 2015-16

| Yarker Public School 20152016 | | | | | | | |
|----------------------------------|--------|----------|----------|-----------|----------|-----------|-----------|
| Class Code | Gender | JK | SK | 01 | 02 | 03 | Total |
| 2/3 | F | | | | 1 | 6 | 7 |
| | M | | | | 5 | 4 | 9 |
| Total 2/3 | | | | | 6 | 10 | 16 |
| JK-1 | F | 1 | 3 | 7 | | | 11 |
| | M | 2 | 3 | 4 | | | 9 |
| Total JK-1 | | 3 | 6 | 11 | | | 20 |
| Grand Total | | 3 | 6 | 11 | 6 | 10 | 36 |

The students in the regular program participated in field trips and hosted many community guests. Due to the age of the students extra curricular activities were minimal.

The third classroom at the school is used from time to time for special education activities and other events but is generally unused.

In 2015-16 the Yarker Family School was provided the following staff allocations:

- 2.0 classroom teachers;
- 0.15 student support teacher;
- 0.32 French teacher;
- 0.08 Preparation time; and
- 0.01 Unique needs.

Total teaching staff for 2015-16 was 2.65. Some administrative time was allotted to Odessa P.S. for the supervision of Yarker Family School.

0.86 Office Administrator time was assigned to Yarker Family School.

Enrolment

Table 5: Yarker Family School Enrolment History and Projections

| Regular Program | | | | | | | | | | | | | | | |
|-----------------|-----------|-----------|-----------|-----------|-----------|-----------|-----------|-----------|-----------|-----------|-----------|-----------|-----------|-----------|-----------|
| Grade | Historic | | | | | Projected | | | | | | | | | |
| | 2011 | 2012 | 2013 | 2014 | 2015 | 2016 | 2017 | 2018 | 2019 | 2020 | 2021 | 2022 | 2023 | 2024 | 2025 |
| JK | 13 | 10 | 14 | 8 | 3 | 9 | 5 | 6 | 6 | 7 | 7 | 7 | 7 | 7 | 7 |
| K | 17 | 16 | 11 | 12 | 6 | 3 | 9 | 5 | 6 | 6 | 7 | 7 | 7 | 7 | 7 |
| 1 | 14 | 16 | 16 | 6 | 11 | 6 | 3 | 9 | 5 | 6 | 7 | 7 | 7 | 7 | 7 |
| 2 | 12 | 11 | 16 | 13 | 6 | 11 | 6 | 3 | 9 | 5 | 6 | 7 | 7 | 7 | 7 |
| 3 | 12 | 10 | 11 | 12 | 10 | 6 | 11 | 6 | 3 | 9 | 5 | 7 | 7 | 7 | 7 |
| Total | 68 | 63 | 68 | 51 | 36 | 35 | 34 | 29 | 29 | 33 | 32 | 35 | 35 | 35 | 35 |

In June 2016 the enrolment at Yarker Family School was 37 students. The enrolment projection for YFS for September 2016 was 35 students. The enrolment on September 14, 2016 was 26.

The families of nine students notified the school before the end of June that the student would not be returning in the fall and the school recoded the students' departure as June 30, 2016.

The chart below provides information the student enrolment.

Table 6: Enrolment Changes between June 2016 and September 2016

| Enrolment Events and Locations | | Number of Students | Total Number of Students |
|------------------------------------|---|--------------------|--------------------------|
| Enrolment June 2015 | | | 37 |
| Departing from | Students moving to grade 4 and to another | 10 | 27 |
| Departing in boundary students | Yarker catchment area to: | | |
| | Odessa | 2 | 25 |
| | Centreville | 1 | 24 |
| Departing out of boundary students | Newburgh | 1 | 23 |
| | Centreville catchment area | 2 | 21 |
| | Centreville | 1 | 20 |
| Enterprise catchment to: | Centreville | 1 | 20 |
| | Selby | 1 | 19 |
| Newburgh catchment to: | | | |
| To another Board | | 1 | 18 |
| JK students registered | | 9 | 27 |
| JK no show | | 1 | 26 |

Table 7: Attendance Area of Students Who Attended Yarker Family School in 2015-16

| Catchment Area of Students | JK | SK | 1 | 2 | 3 | JK-3 Totals by Area |
|----------------------------|----------|----------|-----------|----------|-----------|---------------------|
| Yarker F.S. | 2 | 4 | 7 | 5 | 7 | 25 |
| Centreville P.S. | 0 | 1 | 2 | 0 | 2 | 5 |
| Newburgh P.S. | 1 | 1 | 1 | 1 | 0 | 4 |
| Enterprise P.S. | 0 | 0 | 1 | 0 | 1 | 2 |
| Total by Grade | 3 | 6 | 11 | 6 | 10 | 36 |

For 2015-16 the percentage of students attending from within the catchment boundary was 69.4%. The percentage of students attending from outside the catchment area was 30.6%.

Table 8: LDSB Schools Attended by JK to Grade 3 Students Residing in the Yarker Family School Catchment Area

| School of Attendance | JK | SK | 1 | 2 | 3 | Total JK-3 |
|-------------------------------------|----------|----------|----------|-----------|-----------|------------|
| Yarker P.S. | 2 | 4 | 7 | 5 | 7 | 25 |
| Odessa P.S. | 2 | 1 | 1 | 2 | 6 | 12 |
| Harrowsmith P.S. | 2 | 0 | 1 | 5 | 2 | 10 |
| Amherstview P.S. (French Immersion) | 2 | 1 | 0 | 1 | 1 | 5 |
| Centreville P.S. | 1 | 0 | 0 | 1 | 1 | 3 |
| Newburgh P.S. | 0 | 0 | 0 | 0 | 1 | 1 |
| Total by Grade | 9 | 6 | 9 | 14 | 18 | 56 |

Of the 56 Yarker Family School catchment area students attending an LDSB school:

- 44.6% attended Yarker Family School;
- 55.4% attended another LDSB school;
- 49% of students attending a regular program were enrolled at YFS
- 51% of students attending a regular program from the YFS catchment area attended regular programs in another LDSB school; and
- 8.9% of the JK-3 students in the catchment area attending an LDSB school attended a special program – French Immersion.

3. Other School Use Profile:

Partnerships and Community Use of Schools

The Yarker Family School site includes a Township library built as an addition to the west side of the school. The agreement between the Stone Mills Township and the Limestone District School Board is dated July 17, 2007. The terms of the agreement describe access to the school and the library, maintenance and costs. The library is owned by the Township and the land use is leased by the Township from the Board for one dollar annually. Should the Board at any time identify the school as surplus and places the facility for sale, the Board agrees to sell the school and associated land to the Township at 50% of the appraised market value.

There were no rental applications for Community Use of Schools for Yarker F.S. received in 2015-16.

No before and after care programs or services were provided in 2015-16.

There is presently no space deemed appropriate for additional facility partnerships during school hours.

School Information Profile

Information provided in the profile is based on the 2015-16 school year unless otherwise noted.

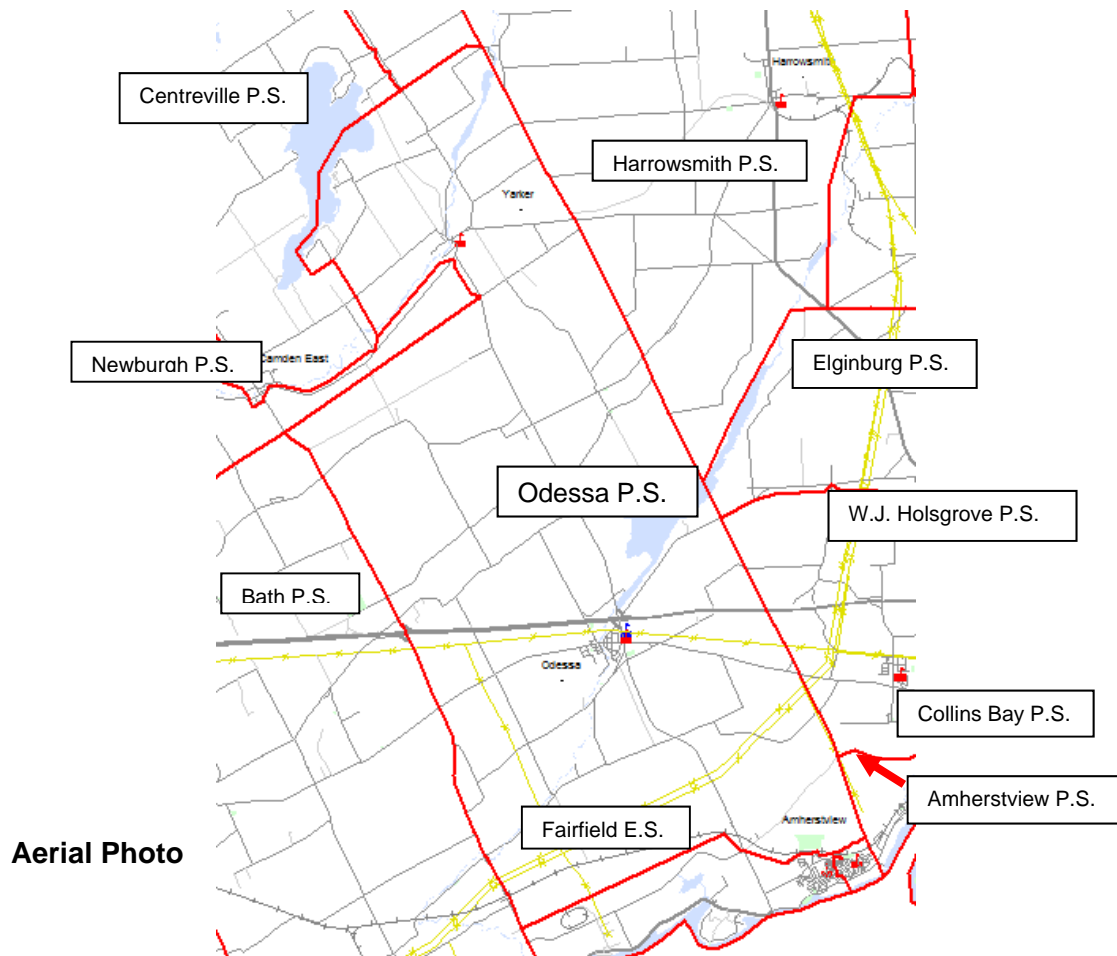
Odessa Public School

10 North St, Odessa, K0H 2H0



1. Facility Profile

School Attendance Area and Adjacent School Areas:



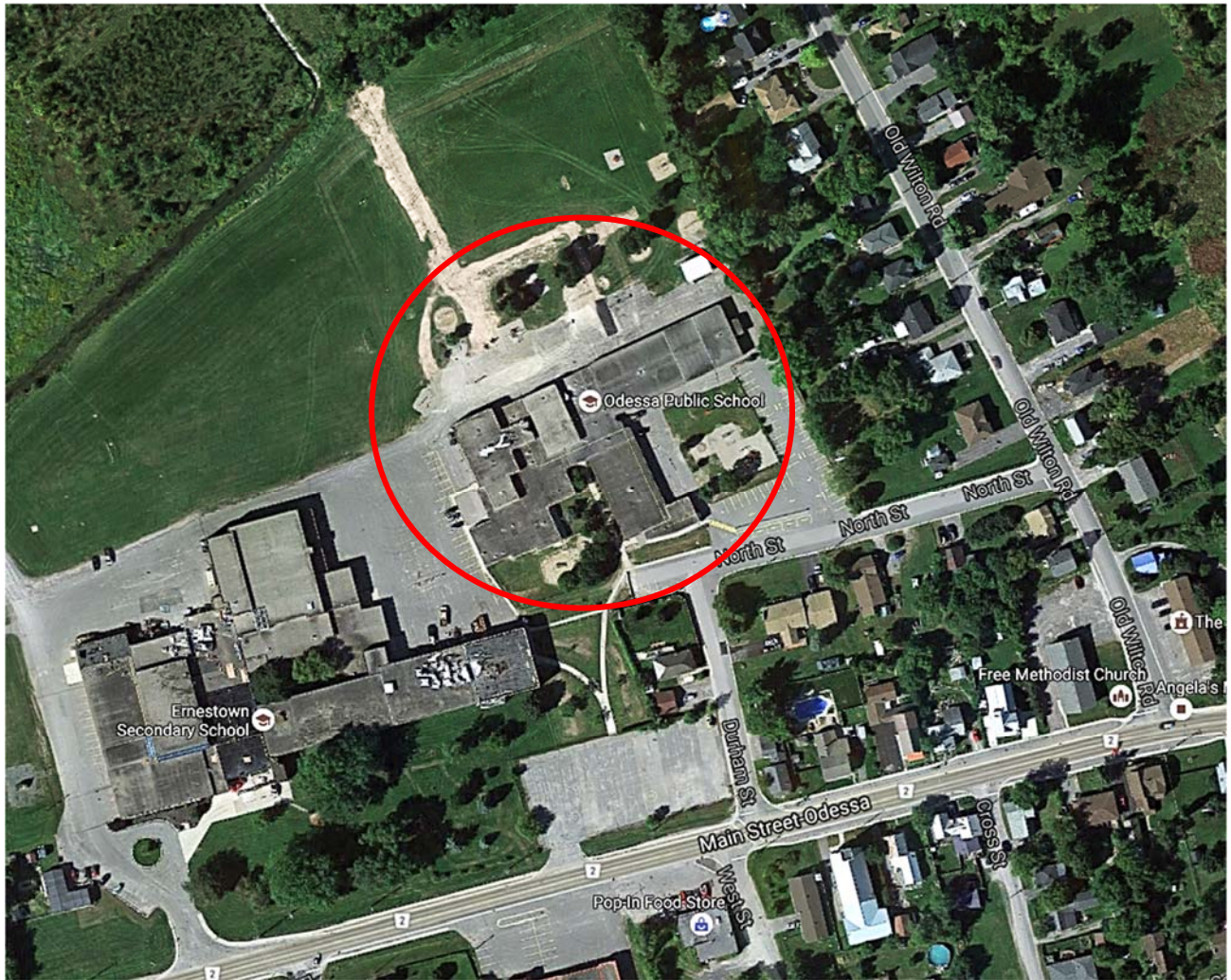


Table 1: Permanent Gross Floor Area and Age

| Year Built | GFA(m ²) | Type of Space |
|------------|----------------------|---------------|
| 1955 | 742.76 | Original |
| 1960 | 184.87 | Addition |
| 1966 | 1120.04 | Addition |
| 1968 | 199.65 | Addition |
| 1974 | 1863.54 | Addition |

Odessa Public School is situated on a 2-hectare site and is 4,110.9 m².

The site has 18,449 m² green space, 774 m² hard surfaced, 3 soccer fields, and 12 play structures or designated activity areas.

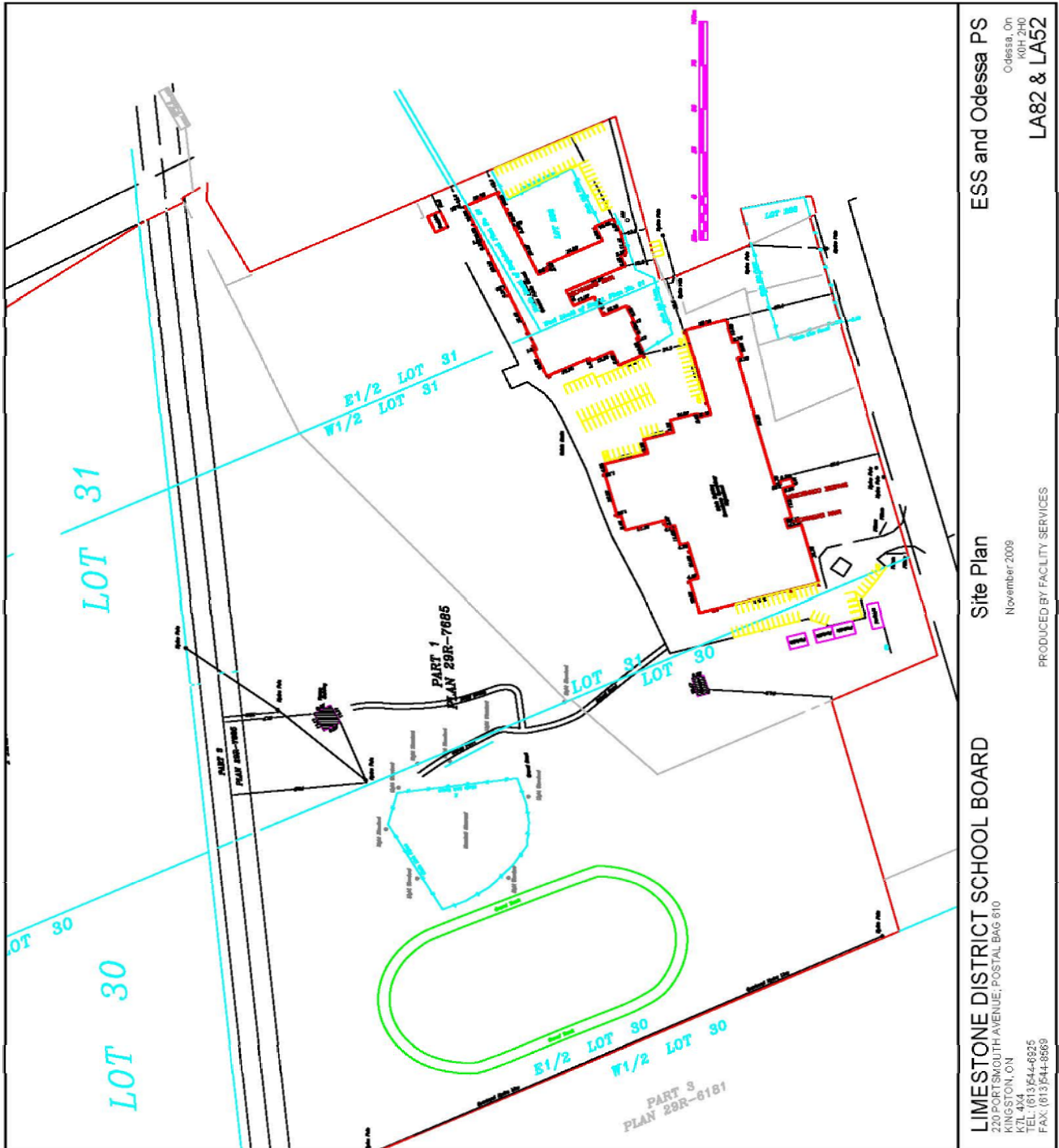
In 2015-16 there was one portable on site which was used for Special Education services.

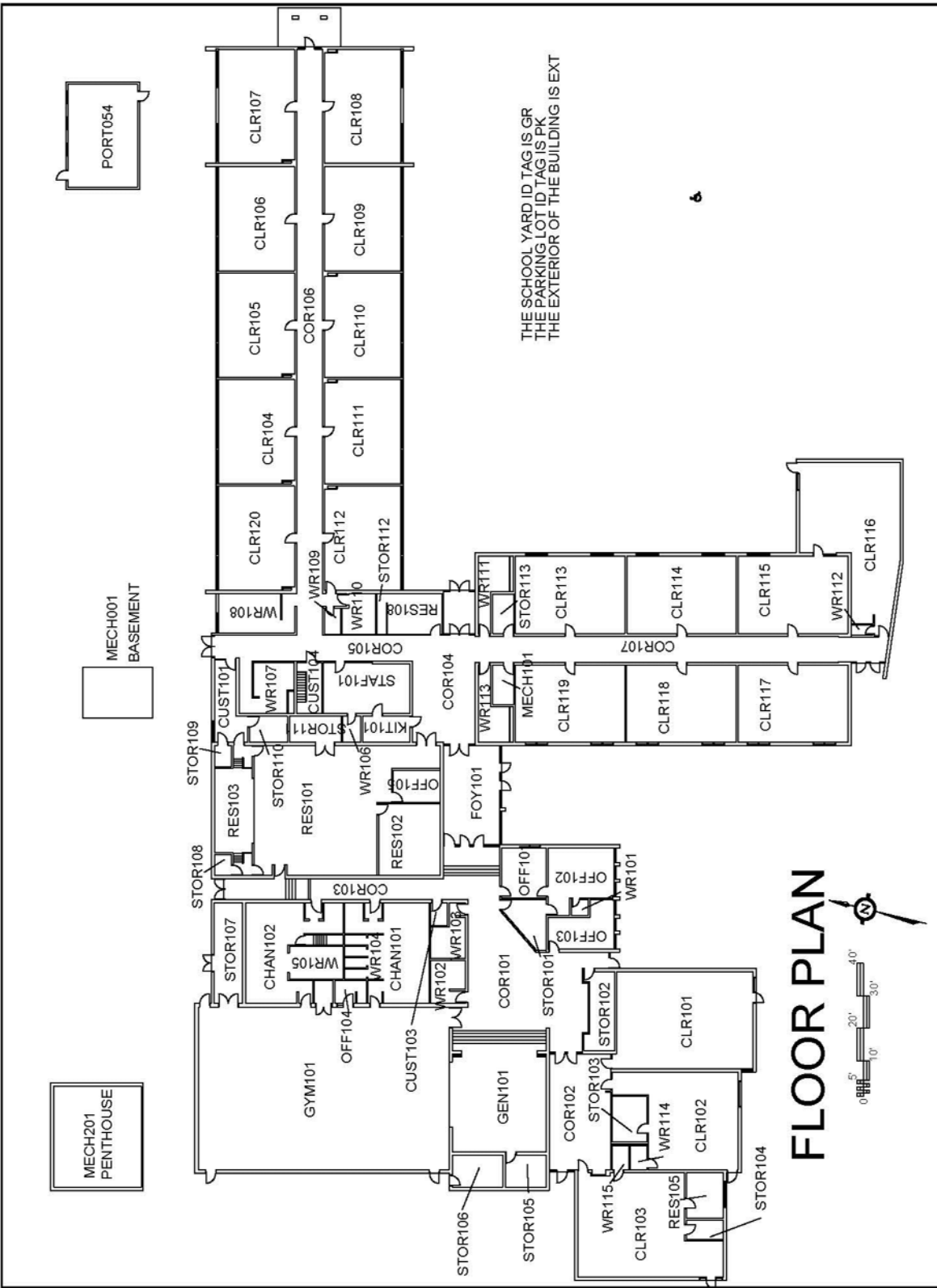
Odessa Public School has student spaces of 18 regular classrooms, 2 Kindergarten rooms, a gymnasium, a library resource centre and 2 resource rooms.

In the LDSB *Multi-Year Accessibility Plan for the Period December 2012 to December 2017* (revised June 2016) the school is rated as Level Four for accessibility. The building has complete access and washrooms can accommodate wheelchairs.

The On-the-ground (OTG) capacity of the school is 490. With an enrolment in 2015-16 of 332 this leaves 121 surplus student spaces and a utilization rate of 67%. (One of the classrooms houses a special program operated by Pathways for Children and Youth. This is discussed later in the profile.)

Site Plan: Ernestown Secondary School and Odessa Public School





Odessa PS
 Box 160
 Odessa, ON
 K0H 2H0
 LA52

FLOOR PLAN

February 2015

PRODUCED BY FACILITY SERVICES

LIMESTONE DISTRICT SCHOOL BOARD
 220 PORTSMOUTH AVENUE, POSTAL BAG #10
 KINGSTON, ON
 K7L 4X4
 TEL: (613)544-6825
 FAX: (613)544-8989

Zoning Map:

Facility Renewal:

Each school in Ontario is thoroughly inspected every 5 years by professional personnel contracted by the Ontario Ministry of Education. Following the inspection information about the condition of a school is entered into a provincial data base. Also incorporated are the events needed to maintain the school building based on industry standards and costs. The school board personnel update the data base as needed maintenance is completed. Below is a table containing the list of renewal needs for Odessa Public School through to 2021.

Table 2: Facility Renewal Event List for Odessa Public School to 2021

| Limestone District School Board | | | |
|---|--|-------------|-------------|
| Event Listing by Ascending Year Revision | | | |
| Odessa Public School | | | |
| Requirement Name | Prime System | Year | Cost |
| .Study [Structural Frame - Siporex Roof Deck - Original Building] | B1010-Floor Construction | 2012 | \$10,847 |
| Wall Finishes - Paint Wall Covering - Original Building and Additions 1, 2, 3 & 4 Renewal | C301005-Wall Finishes - Paint | 2012 | \$48,809 |
| Plumbing Fixtures - Original Building and Additions Renewal | D2010-Plumbing Fixtures | 2012 | \$130,158 |
| Study [Air Distribution, Heating & Cooling - Duct System - Original Building And Additions] | D304001-Distribution Systems - Air Distribution, Heating & Cooling | 2012 | \$10,847 |
| Study [Heating/Chilling water distribution systems - Heating Piping System - Original Building And Additions] | D304003-Distribution Systems - Heated Water Distribution Systems | 2012 | \$10,847 |
| Exhaust Systems - Original Building And Additions Renewal | D304007-Distribution Systems - Exhaust Systems | 2012 | \$21,693 |
| Lighting Equipment - Emergency Lighting - Original Building And Additions Renewal | D502007-Lighting and Branch Wiring - Emergency Lighting | 2012 | \$54,233 |
| Fire Alarm Systems - Original Building Renewal | D503001-Communication and Security - Fire Alarm | 2012 | \$32,540 |
| .Study [Underground Utilities - Site] | G30-Site Mechanical Utilities | 2012 | \$10,847 |
| Major Repair [Structural Frame - Siporex Roof Deck - Original Building] | B1010-Floor Construction | 2013 | \$177,883 |
| Exterior Doors - Aluminum - Original Building and Additions 1, 2, 3 & 4 Renewal | B2030-Exterior Doors | 2013 | \$39,047 |
| Exterior Doors - Exterior Door Hardware - Original Building and Additions 1, 2, 3 & 4 Renewal | B2030-Exterior Doors | 2013 | \$26,032 |
| Exterior Doors - Hollow Metal - Original Building and Additions 1, 2, 3 & 4 Renewal | B2030-Exterior Doors | 2013 | \$52,063 |
| Underground Utilities - Site Renewal | G30-Site Mechanical Utilities | 2013 | \$479,415 |
| Study [Domestic Water Distribution - Plumbing Piping System - Original Building and Additions] | D202001-Domestic Water Distribution - Pipes and Fittings | 2014 | \$10,847 |
| Study D502001 Branch Wiring - D502001 Branch Wiring - Original Building and Additions | D502001-Lighting and Branch Wiring - Branch Wiring | 2014 | \$10,847 |
| Exterior Walls - Sealant - Original Building and Additions 1, 2, 3 & 4 Renewal | B2010-Exterior Walls | 2014 | \$18,439 |
| Exterior Windows - Addition 4 Renewal | B2020-Exterior Windows | 2014 | \$62,910 |

Limestone District School Board
Event Listing by Ascending Year Revision

Odessa Public School

| Requirement Name | Prime System | Year | Cost |
|---|--|-------------|-------------|
| Roof Coverings - Built-Up Roof - Sections A, C & K Renewal | B3010-Roof Coverings | 2014 | \$534,732 |
| Fittings - Washroom Accessories - Original Building and Additions 1, 2, 3 & 4 Renewal | C103002-Fittings - Washroom Accessories | 2014 | \$39,047 |
| Fittings - Millwork - Original Building and Additions 1, 2, 3 & 4 Renewal | C103009-Fittings - Millwork | 2014 | \$165,951 |
| Floor Finishes - Carpet Flooring - Original Building and Additions 1, 2, 3 & 4 Renewal | C302005-Floor Finishes - Carpet | 2014 | \$73,756 |
| Floor Finishes - Painted Concrete Floor - Original Building Renewal | C302007-Floor Finishes - Painted Sealed Concrete | 2014 | \$10,847 |
| Floor Finishes - Vinyl Floor Tiles - Original Building and Addition 1, 2, 3 & 4 Renewal | C302015-Floor Finishes - Vinyl Sheet | 2014 | \$236,454 |
| Domestic Water Distribution - Plumbing Piping System - Original Building and Additions Renewal | D202001-Domestic Water Distribution - Pipes and Fittings | 2014 | \$263,570 |
| Air Distribution, Heating & Cooling - Duct System - Original Building And Additions Renewal | D304001-Distribution Systems - Air Distribution, Heating & Cooling | 2014 | \$518,463 |
| Heating/Chilling water distribution systems - Heating Piping System - Original Building And Additions Renewal | D304003-Distribution Systems - Heated Water Distribution Systems | 2014 | \$536,902 |
| Terminal & Package Units - Original Building and Additions Renewal | D3050-Terminal and Package Units | 2014 | \$582,457 |
| Main Transformers - Original Building Renewal | D501001-Electrical Service and Distribution - Main Transformer | 2014 | \$54,233 |
| Main Switchboards - Main Distribution Panel - Original Building and Additions Renewal | D501003-Electrical Service and Distribution - Main Switchboard | 2014 | \$78,095 |
| Branch Wiring - Original Building and Additions Renewal | D502001-Lighting and Branch Wiring - Branch Wiring | 2014 | \$568,357 |
| Lighting Equipment - Interior Lighting - Original Building And Additions Renewal | D502003-Lighting and Branch Wiring - Interior Lighting | 2014 | \$173,544 |
| Lighting Equipment - Exit Lighting - Original Building And Additions Renewal | D502005-Lighting and Branch Wiring - Exit Lighting and Signs | 2014 | \$32,540 |
| Playing Fields - Asphalt Paved - Site Renewal | G2040-Site Development | 2014 | \$241,877 |
| Site Development - Signage - Site Renewal | G2040-Site Development | 2014 | \$16,270 |
| Moveable Partitions - Gymnasium Renewal | C1010-Partitions | 2015 | \$130,158 |
| Interior Doors - Interior Door Hardware - Original Building and Additions 1, 2, 3 & 4 Renewal | C1020-Interior Doors | 2015 | \$45,555 |
| Interior Doors - Original Building and Additions 1, 2, 3 & 4 Renewal | C1020-Interior Doors | 2015 | \$151,851 |
| Ceiling Finishes - Suspended Acoustic Panel Ceiling - Original Building and Additions 1, 2, 3 & 4 Renewal | C303004-Ceiling Finishes - Acoustic | 2015 | \$132,327 |
| Parking Lots - Asphalt Paved - Site Renewal | G2020-Parking Lots | 2015 | \$142,089 |
| Aboveground Utilities - Site Renewal | G40-Site Electrical Utilities | 2015 | \$48,809 |
| Domestic Water Distribution - Plumbing Pumps Renewal | D202033-Domestic Water Distribution - Pumps | 2017 | \$1,000 |
| Interior Doors - Addition 2 Renewal | C1020-Interior Doors | 2018 | \$8,320 |
| Interior Doors - Addition 4 Renewal | C1020-Interior Doors | 2018 | \$14,560 |
| Interior Doors - Original Building Renewal | C1020-Interior Doors | 2018 | \$12,480 |

Limestone District School Board
Event Listing by Ascending Year Revision

| Odessa Public School | | | |
|---|---|-------------|-------------|
| Requirement Name | Prime System | Year | Cost |
| Domestic Water Distribution - Domestic Water Heater Renewal | D2020-Domestic Water Distribution | 2018 | \$6,896 |
| Domestic Water Distribution - Water Storage Tanks Renewal | D202035-Domestic Water Distribution - Water Treatment Systems | 2018 | \$52,000 |
| Hot Water Boilers - Hot Water, Atmospheric, Water Tube - Original Building and Addition 1, 2, 3 & 4 Renewal | D302002-Heat Generating - Hot Water Boilers | 2018 | \$95,440 |
| Controls & Instrumentation - Original Building and Addition 1, 2, 3 & 4 Renewal | D3060-Controls and Instrumentation | 2018 | \$82,989 |
| Roof Coverings - Addition 2 - K, D Renewal | B3010-Roof Coverings | 2019 | \$232,359 |
| Roof Coverings - Addition 4 - L Renewal | B3010-Roof Coverings | 2019 | \$97,270 |
| Air Handling Units - Central Station AHU - Original Building and Addition 1, 2, 3 & 4 Renewal | D304008-Air Handling Units | 2019 | \$197,483 |
| Other Communications & Alarm Systems - Addition 4 Renewal | D503099-Communication and Security - Other | 2019 | \$8,862 |
| Fencing & Gates - Site Renewal | G204001-Site Development - Fencing and Gates | 2020 | \$78,104 |
| Exterior Doors - Original Building Renewal | B2030-Exterior Doors | 2020 | \$9,360 |
| Partitions - Addition 4 Renewal | C1010-Partitions | 2020 | \$10,086 |
| Fittings - Addition 1 Renewal | C1030-Fittings | 2020 | \$8,107 |
| Fittings - Addition 2 Renewal | C1030-Fittings | 2020 | \$41,928 |
| Fittings - Addition 3 Renewal | C1030-Fittings | 2020 | \$8,107 |
| Fittings - Addition 4 Renewal | C1030-Fittings | 2020 | \$69,780 |
| Fittings - Original Building Renewal | C1030-Fittings | 2020 | \$52,851 |
| Fittings Renewal | C1030-Fittings | 2020 | \$117,219 |
| Fittings - Addition 4 Renewal | C103002-Fittings - Washroom Accessories | 2020 | \$15,000 |
| Fittings - Original Building Renewal | C103002-Fittings - Washroom Accessories | 2020 | \$12,000 |
| Fittings - Addition 4 Renewal | C103018-Fittings - Window Coverings | 2020 | \$65,572 |
| Fittings Renewal | C103018-Fittings - Window Coverings | 2020 | \$62,432 |
| Interior Stair Construction - Addition 4 Renewal | C2010-Stair Construction | 2020 | \$19,968 |
| Interior Stair Construction - Original Building Renewal | C2010-Stair Construction | 2020 | \$9,984 |
| Wall Finishes - Addition 2 Renewal | C301004-Wall Finishes - Ceramic | 2020 | \$65,879 |
| Wall Finishes - Addition 4 Renewal | C301004-Wall Finishes - Ceramic | 2020 | \$55,347 |
| Wall Finishes - Addition 2 Renewal | C301005-Wall Finishes - Paint | 2020 | \$10,076 |
| Wall Finishes - Addition 3 Renewal | C301005-Wall Finishes - Paint | 2020 | \$2,721 |
| Wall Finishes - Addition 4 Renewal | C301005-Wall Finishes - Paint | 2020 | \$16,877 |
| Wall Finishes - Addition 4 Renewal | C301005-Wall Finishes - Paint | 2020 | \$22,772 |
| Wall Finishes - Original Building Renewal | C301005-Wall Finishes - Paint | 2020 | \$12,948 |
| Wall Finishes - Original Building Renewal | C301007-Wall Finishes - Acoustic Panel | 2020 | \$187,665 |
| Floor Finishes - Addition 2 Renewal | C302005-Floor Finishes - Carpet | 2020 | \$13,987 |

Limestone District School Board
Event Listing by Ascending Year Revision

Odessa Public School

| Requirement Name | Prime System | Year | Cost |
|---|--|--------------|--------------------|
| Floor Finishes - Addition 4 Renewal | C302005-Floor Finishes - Carpet | 2020 | \$31,031 |
| Floor Finishes - Original Building Renewal | C302005-Floor Finishes - Carpet | 2020 | \$11,754 |
| Floor Finishes - Original Building Renewal | C302005-Floor Finishes - Carpet | 2020 | \$12,342 |
| Ceiling Finishes - Addition 4 Renewal | C303003-Ceiling Finishes - Gypsum | 2020 | \$12,274 |
| Ceiling Finishes Renewal | C303006-Ceiling Finishes - Paint | 2020 | \$15,634 |
| Gas Supply System Renewal | D301002-Energy Supply System - Natural Gas | 2020 | \$22 |
| Auxiliary Equipment - Chemical Feed System - Original Building and Addition 1, 2, 3 & 4 Renewal | D302050-Auxiliary Equipment - Chemical | 2020 | \$2 |
| Auxiliary Equipment - Stacks & Breaching - Original Building and Addition 1, 2, 3 & 4 Renewal | D302055-Auxiliary Equipment - Stacks & Breaching | 2020 | \$15,709 |
| Controls & Instrumentation - All Renewal | D3060-Controls and Instrumentation | 2020 | \$214,177 |
| Branch Wiring - Orig,A1,A2 Renewal | D502001-Lighting and Branch Wiring - Branch Wiring | 2020 | \$446,542 |
| Lighting Equipment - All Renewal | D502004-Lighting and Branch Wiring - Exterior Lighting | 2020 | \$42,000 |
| Lighting Equipment - Exterior Lighting - Original Building Renewal | D502004-Lighting and Branch Wiring - Exterior Lighting | 2020 | \$10,000 |
| Security Systems Renewal | D503008-Communication and Security - Security | 2020 | \$11 |
| Parking Lots - Site Renewal | G2020-Parking Lots | 2020 | \$7,974 |
| Playing Fields - Site Renewal | G2040-Site Development | 2020 | \$47,849 |
| Playing Fields - Site Renewal | G2040-Site Development | 2020 | \$23,444 |
| Landscaping - Site Renewal | G2050-Landscaping | 2020 | \$34,810 |
| Stormwater Management - Site Renewal | G303007-Storm Sewer - Stormwater Management | 2020 | \$154,510 |
| Fittings - Addition 1 Renewal | C103018-Fittings - Window Coverings | 2021 | \$13,853 |
| Fittings - Addition 2 Renewal | C103018-Fittings - Window Coverings | 2021 | \$17,178 |
| Fittings - Addition 2 Renewal | C103018-Fittings - Window Coverings | 2021 | \$17,178 |
| Fittings - Addition 3 Renewal | C103018-Fittings - Window Coverings | 2021 | \$14,407 |
| Fittings - Original Building Renewal | C103018-Fittings - Window Coverings | 2021 | \$13,853 |
| Floor Finishes - Addition 2 Renewal | C302005-Floor Finishes - Carpet | 2021 | \$13,987 |
| Standpipe Systems - Original Building and Additional 1, 2, 3 & 4 Renewal | D4020-Standpipes | 2021 | \$55,117 |
| | | Total | \$8,990,270 |

Facility Condition Index (FCI):

(Some of the information below was extracted from *Facility Condition Index, LDSB Long Term Pupil Accommodation Plan, Final Report, Appendix B*)

The Facility Condition Index (FCI) is a benchmark used by the Ministry of Education to compare the relative condition of schools across the Province and determine whether it is more economical to fully modernize an existing school or to replace it. FCI is a standard tool used by architects, engineers, and facility planners.

A school's FCI is calculated by dividing the value of the school's deficiencies (renewal needs) by the replacement value of the school. Since the list of renewal needs and the renewal events completed are regularly updated in the data base the FCI changes with each addition or deletion.

| | |
|----------------------------------|---|
| Facility Condition Index | |
| Facility Condition Index (FCI) = | $\frac{\text{Cost to Correct Deficiencies}}{\text{Current Facility Replacement Value}}$ |

The replacement value of Odessa Public School is \$14,666,335.

The Renewal Needs to 2016, as listed above, and reported by the Ontario Ministry of Education is \$5,986,183.

The Facility Condition Index, as of 2016, as reported by the Ministry of Education is 40.8% ($\$5,986,183 \div \$14,666,335 = 40.8\%$)

See information concerning the Ministry release of school FCI data at

<http://www.edu.gov.on.ca/eng/parents/fci.html> and the LDSB Administrative Report regarding the release at

<http://www.limestone.on.ca/PARC/Documents/Administrative%20Report%20re%20Ministry%20Release%20of%20FCI%20Data>

The estimated Renewal Needs to 2021, as of September 2016 and assuming no work is done to complete any of the events, is \$8,990,270.

The estimated Facility Condition Index as of 2021 is 61.3% ($\$8,970,449 \div \$14,666,340 = 61.3\%$)

A higher FCI percentage does not indicate that a school is unsafe or that the wellbeing of students and staff is endangered. Schools are monitored monthly for health and safety issues by on site staff. Each facility is also inspected regularly for maintenance issues by Board Facility Services Staff. As well third party professionals are often employed to inspect some areas of the schools such as roofs.

Table 3: Facility Improvements in the Past 10 Years

| Limestone District School Board | | | | |
|--|--|------|------------------|----------------|
| Archived Event Listing By Ascending Event Year | | | | |
| Odessa Public School | | | | |
| Element | Brief Description | Year | Event Cost | Completed Date |
| D2020 Domestic Water Distribution - Orig,A1,A2,A3 | Replace 03.3-050 Plumbing Piping Systems - Orig,A1,A2,A3 | 2006 | \$210,000 | 2006-08-31 |
| D2020 Domestic Water Distribution - Orig,A1,A2,A3 | Study 03.3-050 Plumbing Piping Systems - Orig,A1,A2,A3 | 2006 | \$8,158 | 2006-08-31 |
| D304003 Heating/Chilling w ater distribution systems - Orig,A1 | Study 03.1-170 Heating & Cooling Piping Systems -Orig,A1 | 2006 | \$8,549 | 2006-08-31 |
| D304003 Heating/Chilling w ater distribution systems - Orig,A1 | Replace 03.1-170 Heating & Cooling Piping Systems -Orig,A1 | 2006 | \$110,000 | 2006-08-31 |
| D304007 Exhaust Systems - All | Replace 03.1-250 Ventilation Fans - All | 2006 | \$39,827 | 2006-08-31 |
| D304008 Air Handling Units - Central Station AHU - Original Building and Addition 1, 2, 3 &4 | Replace [03.1-160 Central Station AHU - Addition 4] | 2006 | \$103,359 | 2006-08-31 |
| D3050 Terminal & Package Units - All | Replace 03.1-190 Terminal Units - All | 2006 | \$168,327 | 2006-08-31 |
| D3060 Controls & Instrumentation - All | Replace 03.2 Control Systems - All | 2006 | \$190,132 | 2006-08-31 |
| D502002 Lighting Equipment - All | Replace 04.3-020 Exterior Lighting - All | 2006 | \$37,526 | 2006-08-03 |
| D304003 Heating/Chilling w ater distribution systems - Addition 2 | Replace [03.1-170 Heating & Cooling Piping Systems - Addition 2] | 2007 | \$48,680 | 2007-08-31 |
| D502001 Branch Wiring - Orig,A1,A2 | Study [D502001 Branch Wiring - Orig,A1,A2] | 2010 | \$19,820 | 2016-03-07 |
| Total | | | \$944,378 | |

Utility Costs & Other Key Operation Costs:

For 2015-6 the utility and other costs were as follows:

Electricity: \$46,556 Heating: \$36,023. Water/Sewer: \$8,990
 Snow Plowing: \$6,665. Grass Cutting: (Done by Board staff) Network Agreement \$500.

Total cost for utilities and other contract costs is approximately \$98,734.

These costs represent approximately \$24.02. per square metre and \$285.36. per student

Distance and Transportation:

Busing

In 2015-16 there were 22 bus routes to transport the students to Odessa Public School. The busing information below reflects the 2016-17 transportation information received from Tri-Board Student Transportation Services Inc. in August 2016. It provides specific information concerning Grade 4 to 8 students residing in the Yarker Family School catchment area.

Table 4: Bus Transportation Information for Gr 4-8 Students residing in the Yarker Family School Catchment Area

| Information Item | AM Bus Run | PM Bus Run |
|--|------------------|-------------------|
| Number of students to be transported | 38 | 38 |
| Shortest estimated ride time | 11 min. | 12 min. |
| Longest estimated ride time, in boundary student | 50 min | 40 min. |
| Longest estimated ride time, out of boundary | Not Applicable | NA |
| Average estimated ride time* | 28.8 to 29.7 min | 25.8 to 27.1 min. |
| Shortest distance to school, in boundary transported student | 11.48 km | 11.45 km |
| Shortest distance to school, out of boundary transported student | Not Applicable | Not Applicable |
| Longest distance to school, in boundary transported student | 28.48 km | 28.45 km |
| Longest distance to school, out of boundary transported student | Not Applicable | Not Applicable |

*The average ride times vary depending on where the students are picked up or dropped off, at home or a caregiver's address.

Under *Board Policy #16: Student Transportation*, students living 1.6 km or more from the school are eligible for transportation to the school. All of the students in the Yarker Family School catchment area are eligible for transportation to Odessa Public School

There are 42 lined parking spaces at the school, one of which is designated for handicap parking. This accommodates the staff and visitors on a regular day-to-day basis.

2. Instructional Profile

School Organization and Staffing

Odessa Public School is a JK to Grade 8 school. In 2015-16 the 344 (346 reported on October 31, 2015) students were organized into 13 regular program classes and 2 Challenge program classes.

Odessa Public School hosts one of the three Challenge Programs in the Limestone DSB.

“The program is designed to meet the needs of academically motivated and/or formally identified gifted students who are seeking new learning challenges while maintaining a healthy, balanced lifestyle. The purpose of the program is to engage students in the provincial grade level curriculum through enriched experiences in a fast-paced, dynamic and multi-faceted learning environment. Students have the opportunity to extend their learning and maximize their potential alongside peers from a variety of schools” Choices at Seven Pamphlet, LDSB website

Table 5: Class Organization and Enrolment 2015-16

Odessa Public School

20152016

| Class Code | Gender | JK | SK | 01 | 02 | 03 | 04 | 05 | 06 | 07 | 08 | Total |
|---------------------|--------|-----------|-----------|-----------|-----------|-----------|-----------|-----------|-----------|-----------|-----------|------------|
| 1 | F | | | 9 | | | | | | | | 9 |
| | M | | | 10 | | | | | | | | 10 |
| Total 1 | | | | 19 | | | | | | | | 19 |
| 1/2 | F | | | 3 | 4 | | | | | | | 7 |
| | M | | | 4 | 6 | | | | | | | 10 |
| Total 1/2 | | | | 7 | 10 | | | | | | | 17 |
| 2/3 | F | | | | 5 | 5 | | | | | | 10 |
| | M | | | | 6 | 4 | | | | | | 10 |
| Total 2/3 | | | | | 11 | 9 | | | | | | 20 |
| 3 | F | | | | | 9 | | | | | | 9 |
| | M | | | | | 11 | | | | | | 11 |
| Total 3 | | | | | | 20 | | | | | | 20 |
| 3/4 | F | | | | | 6 | 3 | | | | | 9 |
| | M | | | | | 4 | 7 | | | | | 11 |
| Total 3/4 | | | | | | 10 | 10 | | | | | 20 |
| 4/5 | F | | | | | | 4 | 4 | | | | 8 |
| | M | | | | | | 8 | 7 | | | | 15 |
| Total 4/5 | | | | | | | 12 | 11 | | | | 23 |
| 5 | F | | | | | | | 13 | | | | 13 |
| | M | | | | | | | 13 | | | | 13 |
| Total 5 | | | | | | | | 26 | | | | 26 |
| 6 | F | | | | | | | | 14 | | | 14 |
| | M | | | | | | | | 13 | | | 13 |
| Total 6 | | | | | | | | | 27 | | | 27 |
| 6/7 | F | | | | | | | | 5 | 10 | | 15 |
| | M | | | | | | | | 7 | 6 | | 13 |
| Total 6/7 | | | | | | | | | 12 | 16 | | 28 |
| 7/8 | F | | | | | | | | | 4 | 7 | 11 |
| | M | | | | | | | | | 11 | 6 | 17 |
| Total 7/8 | | | | | | | | | | 15 | 13 | 28 |
| 7C | F | | | | | | | | | 16 | | 16 |
| | M | | | | | | | | | 6 | | 6 |
| Total 7C | | | | | | | | | | 22 | | 22 |
| 8 | F | | | | | | | | | | 8 | 8 |
| | M | | | | | | | | | | 19 | 19 |
| Total 8 | | | | | | | | | | | 27 | 27 |
| 8C | F | | | | | | | | | | 9 | 9 |
| | M | | | | | | | | | | 8 | 8 |
| Total 8C | | | | | | | | | | | 17 | 17 |
| JK/SKA | F | 7 | 6 | | | | | | | | | 13 |
| | M | 4 | 8 | | | | | | | | | 12 |
| Total JK/SKA | | 11 | 14 | | | | | | | | | 25 |
| JK/SKB | M | 5 | 9 | | | | | | | | | 14 |
| Total JK/SKB | | 9 | 16 | | | | | | | | | 25 |
| Grand Total | | 20 | 30 | 26 | 21 | 39 | 22 | 37 | 39 | 53 | 57 | 344 |

In 2015-16 one classroom at the school also housed a Nexus Day Treatment Service Program operated by Pathways for Children and Youth in partnership with the Limestone District School Board. The Board's students receive services from this program. No revenue is received from the program is staffed by an LDSB teacher.

“The Nexus service is a classroom-based program provided in partnership with local school boards. The program offers support to children who are struggling to succeed in school, and for whom previous in-school support has not been sufficient. This program is geared toward students with complex social, emotional, and behavioural needs that interfere with their successful adjustment within a community school environment.

The Day Treatment program typically lasts one school year, with the goal of helping children develop the skills they need to function in a regular classroom setting. Staff interacts with the home school, providing feedback on the child's progress so supports are in place upon the child's return.” Pathways for Children & Youth website

Odessa also has an Itinerant School to Community Teacher and a Limestone Learning Disabilities program to assist students with special education needs.

In 2015-16 Odessa offered a full complement of extra-curricular activities, for students in grades 3 – 8 but primarily for those in the high junior/intermediate grades. Students at the school participated in all track and field events and sports such as basketball, volleyball, soccer, and touch football. Where junior teams were permitted, the school also participated. Odessa Public School had an eco-club, a character club, and others as interest and needs arose.

There is a before/after school program offered through Lennox & Addington Resources for Children (LARC), with drop offs as early as 7am and pick ups as late as 6pm.

Lennox & Addington Resources for Children (LARC) is a non-profit, charitable organization committed to meeting the diverse needs and demands of today's children and families by providing quality care, ongoing public education and advocacy to the community of Lennox and Addington.

In 2015-16 the Odessa Public School was provided the following staff allocations:

- 15. Classroom teachers;
- 0.8 Student support teacher;
- 2.06 French teacher;
- 1.0 Preparation time; and
- 0.14 Unique needs.

Total teaching staff for 2015-16 was 19. Administrative time allotted to Odessa P.S. for the supervision of Odessa Public School and Yarker Family School was 1.5.

1.0 Office Administrator time and 2.0 custodial time was assigned to Odessa Public School.

There were 6 Educational Assistants for a total of 5.25 full time equivalent and 2 full time equivalent Early Childhood Educators.

Enrolment

Table 6: Odessa Public School Enrolment History and Projections

| Regular & Challenge Program Enrolment | | | | | | | | | | | | | | | |
|---------------------------------------|------------|------------|------------|------------|------------|------------|------------|------------|------------|------------|------------|------------|------------|------------|------------|
| Grade | 2011 | 2012 | 2013 | 2014 | 2015 | 2016 | 2017 | 2018 | 2019 | 2020 | 2021 | 2022 | 2023 | 2024 | 2025 |
| JK | 20 | 23 | 19 | 24 | 20 | 20 | 22 | 20 | 22 | 22 | 22 | 22 | 22 | 22 | 22 |
| K | 20 | 28 | 21 | 22 | 30 | 23 | 23 | 25 | 22 | 25 | 25 | 25 | 25 | 25 | 25 |
| 1 | 36 | 19 | 28 | 24 | 26 | 33 | 26 | 25 | 28 | 24 | 27 | 27 | 27 | 27 | 27 |
| 2 | 27 | 36 | 17 | 32 | 21 | 27 | 34 | 27 | 26 | 29 | 25 | 28 | 28 | 28 | 28 |
| 3 | 30 | 29 | 34 | 18 | 39 | 22 | 28 | 35 | 28 | 27 | 30 | 26 | 29 | 29 | 29 |
| 4 | 49 | 41 | 39 | 36 | 22 | 43 | 25 | 35 | 36 | 27 | 32 | 31 | 29 | 32 | 32 |
| 5 | 50 | 51 | 44 | 38 | 37 | 23 | 44 | 26 | 36 | 37 | 28 | 33 | 32 | 30 | 33 |
| 6 | 43 | 53 | 43 | 45 | 39 | 38 | 24 | 45 | 27 | 37 | 38 | 29 | 34 | 33 | 31 |
| 7 | 70 | 59 | 66 | 55 | 54 | 50 | 50 | 35 | 56 | 38 | 48 | 49 | 40 | 45 | 44 |
| 8 | 71 | 72 | 57 | 65 | 58 | 53 | 49 | 48 | 34 | 55 | 37 | 47 | 48 | 39 | 44 |
| Total | 416 | 411 | 368 | 359 | 346 | 332 | 325 | 321 | 315 | 321 | 312 | 317 | 314 | 310 | 315 |

Table 7: Attendance Area of Students Who Attended Odessa Public School in 2015-16

| Catchment Area of Students | JK | K | 1 | 2 | 3 | 4 | 5 | 6 | 7 | 8 | JK-3 | 4-8 | JK-8 |
|----------------------------------|-----------|-----------|-----------|-----------|-----------|-----------|-----------|-----------|-----------|-----------|------------|------------|------------|
| Odessa P.S. | 14 | 23 | 22 | 14 | 26 | 12 | 22 | 19 | 27 | 28 | 99 | 108 | 207 |
| Yarker P.S. | 2 | 1 | 1 | 2 | 6 | 5 | 5 | 10 | 4 | 8 | 12 | 32 | 44 |
| Bath P.S. | 3 | 2 | 2 | 1 | 3 | 2 | 2 | 0 | 7 | 6 | 11 | 17 | 28 |
| Newburgh P.S. | 0 | 1 | 0 | 0 | 1 | 0 | 3 | 1 | 0 | 4 | 2 | 8 | 10 |
| Amherstview P.S. | 0 | 0 | 0 | 0 | 1 | 1 | 0 | 0 | 3 | 2 | 1 | 6 | 7 |
| Centreville P.S. | 0 | 0 | 0 | 2 | 0 | 1 | 2 | 1 | 0 | 1 | 2 | 5 | 7 |
| Fairfield E.S. | 1 | 0 | 0 | 0 | 0 | 0 | 0 | 2 | 4 | 0 | 1 | 6 | 7 |
| Harrowsmith P.S. | 0 | 0 | 0 | 1 | 0 | 0 | 1 | 1 | 1 | 1 | 1 | 4 | 5 |
| Southview P.S. | 0 | 0 | 0 | 0 | 0 | 0 | 0 | 0 | 3 | 2 | 0 | 5 | 5 |
| Welborne Avenue P.S. (Bussed) | 0 | 0 | 1 | 0 | 1 | 0 | 0 | 1 | 0 | 1 | 2 | 2 | 4 |
| W.J. Holsgrove P.S. | 0 | 0 | 0 | 1 | 0 | 0 | 1 | 2 | 0 | 0 | 1 | 3 | 4 |
| Enterprise P.S. | 0 | 1 | 0 | 0 | 0 | 0 | 0 | 1 | 0 | 1 | 1 | 2 | 3 |
| Selby P.S. | 0 | 0 | 0 | 0 | 0 | 0 | 0 | 0 | 2 | 1 | 0 | 3 | 3 |
| The Prince Charles School | 0 | 0 | 0 | 0 | 0 | 0 | 0 | 0 | 1 | 2 | 0 | 3 | 3 |
| Elginburg P.S. | 0 | 0 | 0 | 0 | 0 | 0 | 0 | 1 | 0 | 1 | 0 | 2 | 2 |
| Centennial P.S. (Bussed) | 0 | 0 | 0 | 0 | 0 | 0 | 0 | 0 | 1 | 0 | 0 | 1 | 1 |
| Collins Bay P.S. | 0 | 0 | 0 | 0 | 0 | 1 | 0 | 0 | 0 | 0 | 0 | 1 | 1 |
| Ecole Sir John A. Macdonald P.S. | 0 | 1 | 0 | 0 | 0 | 0 | 0 | 0 | 0 | 0 | 1 | 0 | 1 |
| James R. Henderson P.S. | 0 | 0 | 0 | 0 | 0 | 0 | 1 | 0 | 0 | 0 | 0 | 1 | 1 |
| John Graves Simcoe P.S. | 0 | 0 | 0 | 0 | 1 | 0 | 0 | 0 | 0 | 0 | 1 | 0 | 1 |
| Loughborough P.S. | 0 | 1 | 0 | 0 | 0 | 0 | 0 | 0 | 0 | 0 | 1 | 0 | 1 |
| Poison Park P.S. | 0 | 0 | 0 | 0 | 0 | 0 | 0 | 0 | 1 | 0 | 0 | 1 | 1 |
| Total by Grade | 20 | 30 | 26 | 21 | 39 | 22 | 37 | 39 | 54 | 58 | 136 | 210 | 346 |

For 2015-16 the percentage of students attending from within the catchment boundary was 59.8%. The percentage of students attending from outside the catchment area was 40.2%. These numbers include students from the Challenge Program, many of whom come from other schools.

Twelve JK-Grade 3 students from the Yarker Family School catchment area attended Odessa Public School in 2015-16.

Table 8: LDSB Schools Attended by All JK to Grade 8 Students Residing in the Odessa Public School Catchment Area

| School of Attendance | JK | K | 1 | 2 | 3 | 4 | 5 | 6 | 7 | 8 | JK-3 | 4-8 | JK-8 |
|----------------------------------|-----------|-----------|-----------|-----------|-----------|-----------|-----------|-----------|-----------|-----------|------------|------------|------------|
| Odessa P.S. | 14 | 23 | 22 | 14 | 26 | 12 | 22 | 19 | 27 | 28 | 99 | 108 | 207 |
| Amherstview P.S. | 6 | 6 | 4 | 5 | 4 | 7 | 7 | 4 | 1 | 1 | 25 | 20 | 45 |
| Harrowsmith P.S. | 2 | 0 | 1 | 0 | 0 | 2 | 0 | 1 | 4 | 1 | 3 | 8 | 11 |
| Module de l'Acadie | 0 | 0 | 0 | 0 | 0 | 0 | 0 | 0 | 1 | 4 | 0 | 5 | 5 |
| Bath P.S. | 0 | 0 | 0 | 0 | 0 | 0 | 1 | 0 | 1 | 2 | 0 | 4 | 4 |
| Calvin Park P.S. | 0 | 0 | 0 | 0 | 0 | 0 | 0 | 0 | 3 | 0 | 0 | 3 | 3 |
| Fairfield E.S. | 0 | 0 | 0 | 1 | 0 | 1 | 0 | 0 | 0 | 0 | 1 | 1 | 2 |
| Joyceville P.S. | 1 | 0 | 0 | 0 | 0 | 1 | 0 | 0 | 0 | 0 | 1 | 1 | 2 |
| Module Vanier | 0 | 0 | 0 | 0 | 0 | 0 | 0 | 0 | 0 | 2 | 0 | 2 | 2 |
| Winston Churchill P.S. | 0 | 0 | 0 | 1 | 0 | 1 | 0 | 0 | 0 | 0 | 1 | 1 | 2 |
| Ecole Sir John A. Macdonald P.S. | 0 | 0 | 0 | 1 | 0 | 0 | 0 | 0 | 0 | 0 | 1 | 0 | 1 |
| Lancaster Drive P.S. | 0 | 0 | 0 | 0 | 1 | 0 | 0 | 0 | 0 | 0 | 1 | 0 | 1 |
| Loughborough P.S. | 0 | 0 | 0 | 0 | 0 | 0 | 0 | 0 | 1 | 0 | 0 | 1 | 1 |
| Rideau Heights P.S. | 0 | 0 | 0 | 0 | 0 | 1 | 0 | 0 | 0 | 0 | 0 | 1 | 1 |
| Selby P.S. | 0 | 0 | 0 | 0 | 0 | 0 | 0 | 1 | 0 | 0 | 0 | 1 | 1 |
| The Prince Charles School | 0 | 1 | 0 | 0 | 0 | 0 | 0 | 0 | 0 | 0 | 1 | 0 | 1 |
| W.J. Holsgrove P.S. | 0 | 0 | 0 | 0 | 0 | 0 | 1 | 0 | 0 | 0 | 0 | 1 | 1 |
| Total by Grade | 23 | 30 | 27 | 22 | 31 | 25 | 31 | 25 | 38 | 38 | 133 | 157 | 290 |

Table 9: LDSB Schools Attended for a French program by JK to Grade 8 Students Residing in the Odessa Public School Catchment Area

| School of Attendance | JK | K | 1 | 2 | 3 | 4 | 5 | 6 | 7 | 8 | JK-3 | 4-8 | JK-8 |
|----------------------------------|----------|----------|----------|----------|----------|----------|----------|----------|----------|----------|-----------|-----------|-----------|
| Amherstview P.S. | 6 | 4 | 4 | 5 | 3 | 7 | 6 | 1 | 0 | 0 | 22 | 14 | 36 |
| Module de l'Acadie | 0 | 0 | 0 | 0 | 0 | 0 | 0 | 0 | 1 | 4 | 0 | 5 | 5 |
| Module Vanier | 0 | 0 | 0 | 0 | 0 | 0 | 0 | 0 | 0 | 2 | 0 | 2 | 2 |
| Ecole Sir John A. Macdonald P.S. | 0 | 0 | 0 | 1 | 0 | 0 | 0 | 0 | 0 | 0 | 1 | 0 | 1 |
| Harrowsmith P.S. | 0 | 0 | 0 | 0 | 0 | 0 | 0 | 0 | 1 | 0 | 0 | 1 | 1 |
| The Prince Charles School | 0 | 1 | 0 | 0 | 0 | 0 | 0 | 0 | 0 | 0 | 1 | 0 | 1 |
| Total by Grade | 6 | 5 | 4 | 6 | 3 | 7 | 6 | 1 | 2 | 6 | 24 | 22 | 46 |

Of the 290 Odessa Public School catchment area students attending an LDSB school:

- 71.4% attended Odessa Public School;
- 28.6% attended another LDSB school;
- 84.8% of students attending a regular or Challenge program were enrolled at Odessa Public School
- 15.2% of students attending a regular program from the Odessa Public School catchment area attended regular programs in another LDSB school (Three students attending Calvin Park P.S. may be attending a special Choices at Seven Program); and
- 15.9% of the JK-8 students in the catchment area attending an LDSB school attended a French program.

3. Other School Use Profile:

Partnerships and Community Use of Schools

The Board has a partnership with Pathways for Children & Youth in providing space for the Nexus Program housed at Odessa. The Limestone DSB students receive service from this program.

There is also a partnership with Lennox & Addington Resources for Children (LARC) to provide Before and after school programs. Rental fees are paid only for use on non-instructional days.

There is presently no space deemed appropriate for additional facility partnerships during school hours.

Table 10: Community Use of Odessa Public School for 2015-16



Rental Contracts Hours and Attendance Report

Printed: 12 Jul 2016, 09:36 AM

User: downiec

Date from: September 1, 2015
Complex: Odessa P.S.

Date to: August 31, 2016
Facility Option: Complex

| Starting Rental # | Attendance | Function Facility | Account Business # | Hours | Cost |
|---------------------|------------|--|--|-------|----------|
| Odessa P.S. | | | | | |
| 11 Sep 2015 6090 | 108 | CUS: Social Gym 101 - Single Gym | Odessa Free Methodist Church [REDACTED] | 13:30 | \$0.00 |
| 16 Sep 2015 6091 | 720 | CUS: Sports and Recreation Gym 101 - Single Gym | Kingston Volleyball Club [REDACTED] | 120:0 | \$0.00 |
| 17 Sep 2015 6145 | 740 | CUS: Sports and Recreation Gym 101 - Single Gym | Kevin Fobert Karate For Children [REDACTED] | 37:0 | \$359.64 |
| 28 Sep 2015 6338 | 1500 | CUS: Sports and Recreation Gym 101 - Single Gym | Loyalist Township [REDACTED] | 20:0 | \$0.00 |
| 28 Sep 2015 6339 | 1500 | CUS: Sports and Recreation Gym 101 - Single Gym | Loyalist Township [REDACTED] | 20:0 | \$0.00 |
| 06 Oct 2015 6340 | 930 | CUS: Sports and Recreation Gym 101 - Single Gym | Loyalist Township [REDACTED] | 62:0 | \$0.00 |
| 29 Jan 2016 6628 | 10 | CUS: Event Gym 101 - Single Gym | Pierog, Jason [REDACTED] | 2:0 | \$83.61 |
| 14 May 2016 6907 | 25 | CUS: Arts and Culture Gym 101 - Single Gym | LDSB - Odessa PS [REDACTED] | 6:0 | \$0.00 |
| Grand Total | 5533 | | | | |

Appendix C: References

Board Policy #16: Student Transportation; Limestone District School Board; Revised January 2013. <http://www.limestone.on.ca/board/documents/policies/BP-16A.pdf>

Capital Planning Capacity Program 2015-16 and 2016-17; Ontario Ministry of Education, Memorandum 2016:B04; https://efis.fma.csc.gov.on.ca/faab/Memos/B2016/B4_EN_REV.pdf

Choices at Seven Pamphlet; Limestone District School Board; 2016-17; http://www.limestone.on.ca/Programs/Specialized_Programs/Choices_at_Seven/Choices_at_Seven_Documents/Pamphlet.pdf

Community Planning & Partnership Minutes; Limestone District School Board; September 8, 2016. <http://www.limestone.on.ca/PARC/Documents/PPP%20Minutes%20-September%208%202016.pdf>

Facility Condition Index, LDSB Long Term Pupil Accommodation Plan, Final Report, Appendix B; Ameresco Asset Sustainability Group Inc. May 2016. <http://www.limestone.on.ca/PARC/Documents/LTAP%20Report%20by%20Ameresco%20Asset%20Sustainability%20Group%20May%202016.pdf>

Facility Condition Index (FCI); Ontario Ministry of Education; 2016; <http://www.edu.gov.on.ca/eng/parents/fci.html>

Long Term Pupil Accommodation Plan, Final Report; Ameresco Asset Sustainability; May 2016. <http://www.limestone.on.ca/PARC/Documents/LTAP%20Report%20by%20Ameresco%20Asset%20Sustainability%20Group%20May%202016.pdf>

Multi-Year Accessibility Plan For the Period December 2012 to December 2017; Accessibility Planning Committee, Limestone District School Board; Revised June 2016. http://www.limestone.on.ca/Accessibility/Accessibility_Plan.pdf

Nexus Day Treatment Service; Pathways for Children & Youth; Website. <http://www.pathwayschildrenyouth.org/index.cfm?CategoryID=1&SubCategoryID=7>

School Age Programs; Lennox & Addington Resources For Children; <http://larc4kids.com/?Itemid=60>

Technical Paper: School Facility Condition Assessment Data Assessment Cycle: 2011 – 2015; Ontario Ministry of Education; Summer 2016; http://www.edu.gov.on.ca/eng/parents/fci_tech_paper_en.pdf

Limestone District School Board
Administrative Report



Report to: The School Enrolment/School Capacity Committee of the Whole Board

From: Debra Rantz, Director of Education
Paul Babin, Superintendent of Business Services

Date: September 28, 2016

Subject: **Consultation with ALCDSB concerning joint use facility on Wolfe Island**

Objectives:

The purpose of this Administrative Report is to seek Board approval for the Director to write to the Director of Education of the Algonquin Lakeshore Catholic District School Board (ALCDSB) requesting a meeting(s) to explore the possibility of a joint use facility on Wolfe Island.

History/Background:

In reviewing the *Long Term Accommodation Plan* produced by Ameresco Asset Sustainability Group Inc. and received by the Board in May 2016, the report contained the following recommendation (page 31):

"Explore the possibility of a joint use facility with ALCDSB on Wolfe Island by undertaking a Consultation in 2016/17 involving Marysville Public School."

Enrolment and Class Organization:

Marysville Public School is a JK to Grade 8 school with two regular classrooms and a Kindergarten room. The capacity of the school is 72.

The enrolment on October 3, 2015 was 25 and was projected to decline to 14 students by 2019 and to 10 students by 2024. However, the enrolment for 2016-17 was projected to be 22 and as of September 14, 2016 was 33.

In 2015-16 the students were organized into 2 classes, a JK to Grade 3 class of nine students and a Grade 4 to 8 class of 16 students.

Staffing:

The total teaching staff for 2015-16 was 3.09. Some administrative time was allotted to First Avenue Public School for the supervision of Marysville Public School. There was 0.86 Office Administrator time, 0.375 Caretaker time and 1 FTE Educational Assistant assigned in 2015-16.

Marysville is a school that receives the *Supported School Allocation*. This extra funding provides support for classroom and instructional needs.

Sacred Heart Catholic School:

Sacred Heart Catholic School (SHCS) is a JK to Grade 8 school with five regular classrooms, a Kindergarten room, a library and gymnasium. There are two portables on site used for outdoor education facilities for the Board.

We understand that the capacity of SHCS is 141 students and that enrolment in 2015-16 was 53 students.

Previous Arrangement between Marysville Public School and Sacred Heart Catholic School:

There was an agreement between the Frontenac County Board of Education and the Frontenac Lennox and Addington County Roman Catholic Separate School Board that operated from approximately September 1996 to June 2006.

Observations/Analysis:

The two schools are located about an 8-minute walk or 2-minute drive apart, which ensures that there is no significant extra ride time for students who are bused.

Given the present enrolment projections for Marysville Public School a shared facility agreement would not continue as a viable arrangement for an extensive time period. The Board may need to re-examine the school issues again in about 10 years.

Recommendations:

1. That the School Enrolment/School Capacity Committee of the Whole Board (SE/SCC) receive the *Administrative Report on Consultation with ALCDSB concerning joint use facility on Wolfe Island;*
2. That the SE/SCC recommend that the Board grant approval for the Director to write to the Director of Education of the Algonquin Lakeshore Catholic District School Board (ALCDSB) requesting a meeting(s) to explore the possibility of a joint use facility on Wolfe Island, and that the Director report back to the SE/SCC at the April 2017 meeting.

This report was reviewed by:



Paul Babin
Superintendent of Business Services



Debra Rantz
Director of Education